

Turley, Oklahoma

Is a diverse community located just north of the city of Tulsa in northern Tulsa County, and covers nearly four square miles of land. Approximately 3,000 people live in the community.

Turley, Oklahoma

- Residents have an active and organized neighborhood community group which meets regularly. Due to increased problems associated with crime, a neighborhood watch program was formed by community members. Jason Turley is the head of the group. Works directly with the Tulsa County Sheriff's Office in attempts to reduce crime within the community.

Community Policing Strategy

- TCSO used community policing philosophy, and employed a three tiered approach to the problem:
 - 1. Law enforcement special emphasis- saturation patrols
 - 2. Specialized units for surveillance and enforcement-TTU
 - 3. Collaboration of resources with citizens- Neighborhood Watch

Beginning Stages

- Beginning in August, 2019, TCSO used directed patrols to saturate all roadways in and around Turley. Deputies aggressively enforced traffic and pedestrian laws, issuing dozens of traffic citations and making arrests for outstanding warrants by way of pedestrian checks and traffic stops. This included all shifts: midnights, days and evenings. Continued aggressive enforcement for three weeks.
*Informed local media prior to and during the enforcement phase.

Measurable enforcement

- Week #1: traffic citations- 11 arrests- 5 warrants served- 2 traffic stops- 23 pedestrian checks- 8 and one pursuit.
- Week #2: traffic citations- 19 arrests- 11 warrants served- 5 traffic stops- 13 pedestrian checks- 10.
- Week #3: traffic citations- 7 arrests- 7 warrants served- 5 traffic stops- 11 pedestrian checks- 9.
- Totals: traffic citations- 37 arrests- 23 warrants- 12 traffic stops- 47 and pedestrian checks- 27.

Tulsa County Sheriff's Deputies on Patrol



Specialty Teams: Tactical Tracking Unit

- Units deployed onto the Osage Prairie Trail, which is a pedestrian trail used for jogging and bicycling through Turley. Deputies performed surveillance on activities along the trail, and contacted many people... ultimately leading to several arrests, (some for felony warrants originating outside the county).
- Unit used drones to survey area and take photos of possible drug activity.
- Unit is continuing to work on possible drug activity stemming from houses adjacent to the trail.

Final phase: Neighborhood Watch Program

- Deputies are working directly with members of the Neighborhood Watch program.
- Conducting law enforcement ride-alongs in order to train members how to spot criminal activity, what to look for on crime watch, and how to report suspicious persons and activities.
- How to interact with dispatch and the importance of reporting procedures.

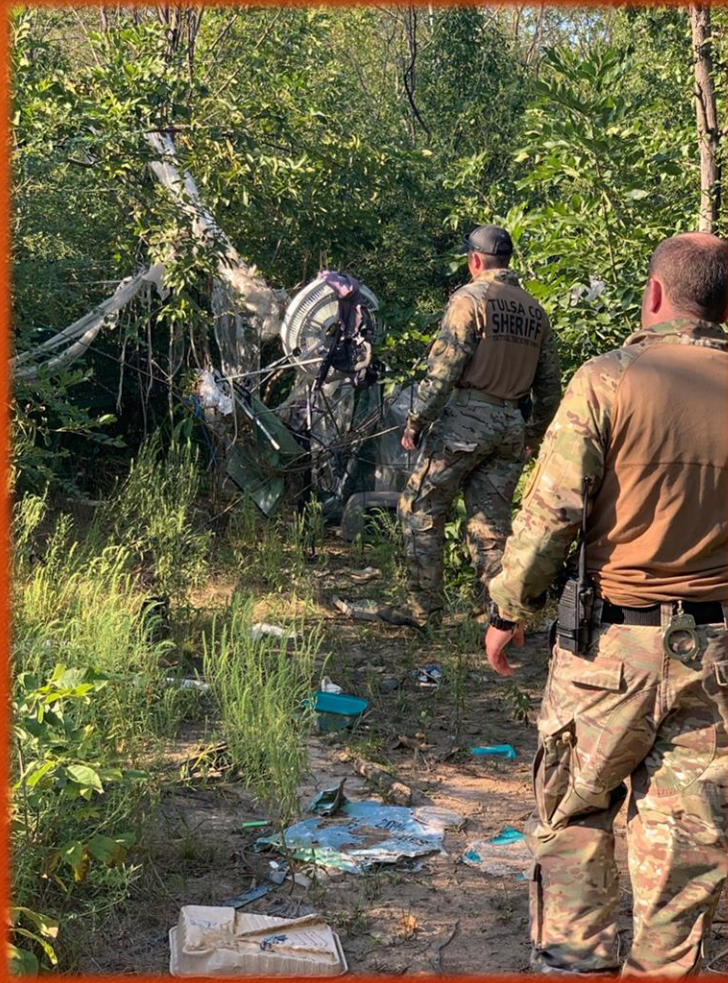
Tactical Tracking Unit



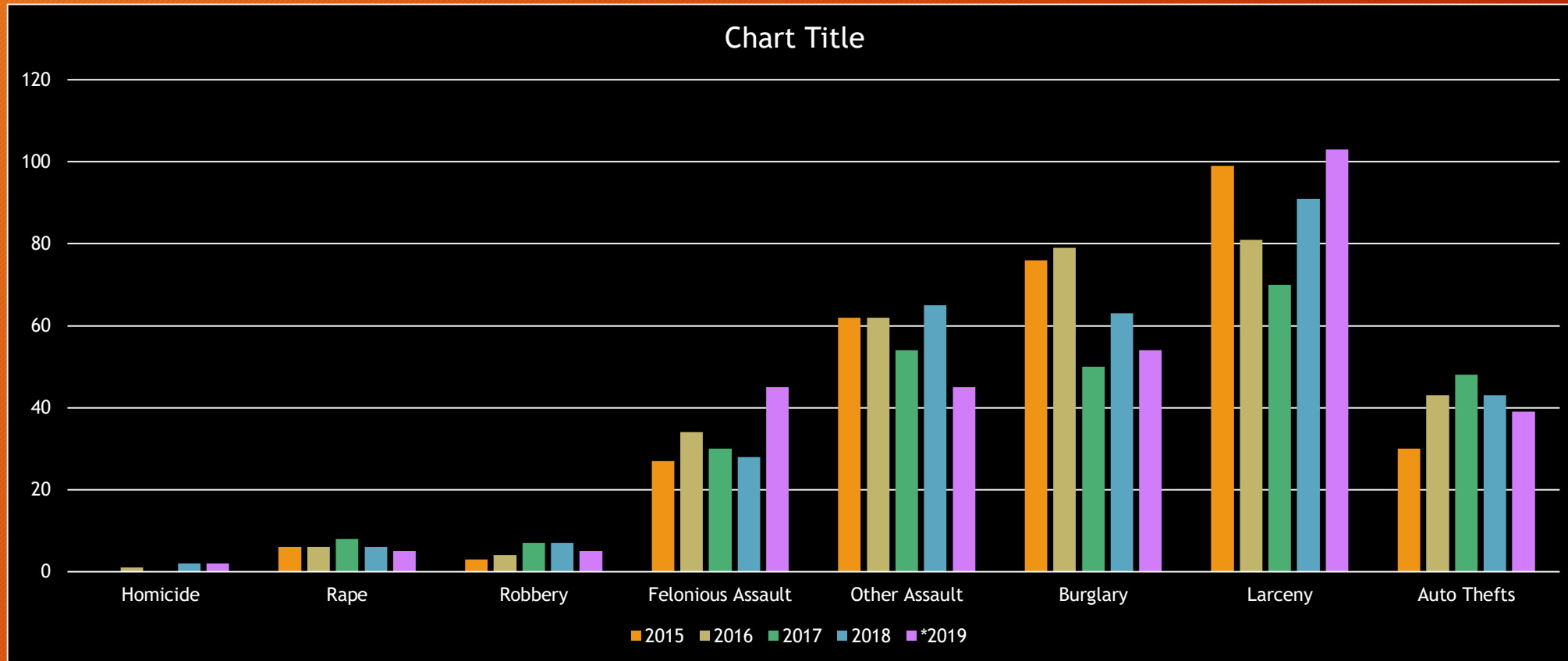
Turley Area UCR Crimes Reported

UCR Description	2015	2016	2017	2018	*2019	*(Jan-Sep))
Homicide	0	1	0	2	2	
Rape	6	6	8	6	5	
Robbery	3	4	7	7	5	
Felonious Assault	27	34	30	28	45	
Other Assault	62	62	54	65	45	
Burglary	76	79	50	63	54	
Larceny	99	81	70	91	103	
Auto Thefts	30	43	48	43	39	
Total Cases Reported	303	311	248	305	*298	

Record High Larcenies and Felonious Assaults



Turley Area UCR Crimes Reported



Turley Area UCR Crimes Reported

	2015	2016	2017	2018	*2019	*(Jan-Sep))
Drug/Narcotics	41	45	31	11	6	