



FY 2027 Budget Hearing Presentation

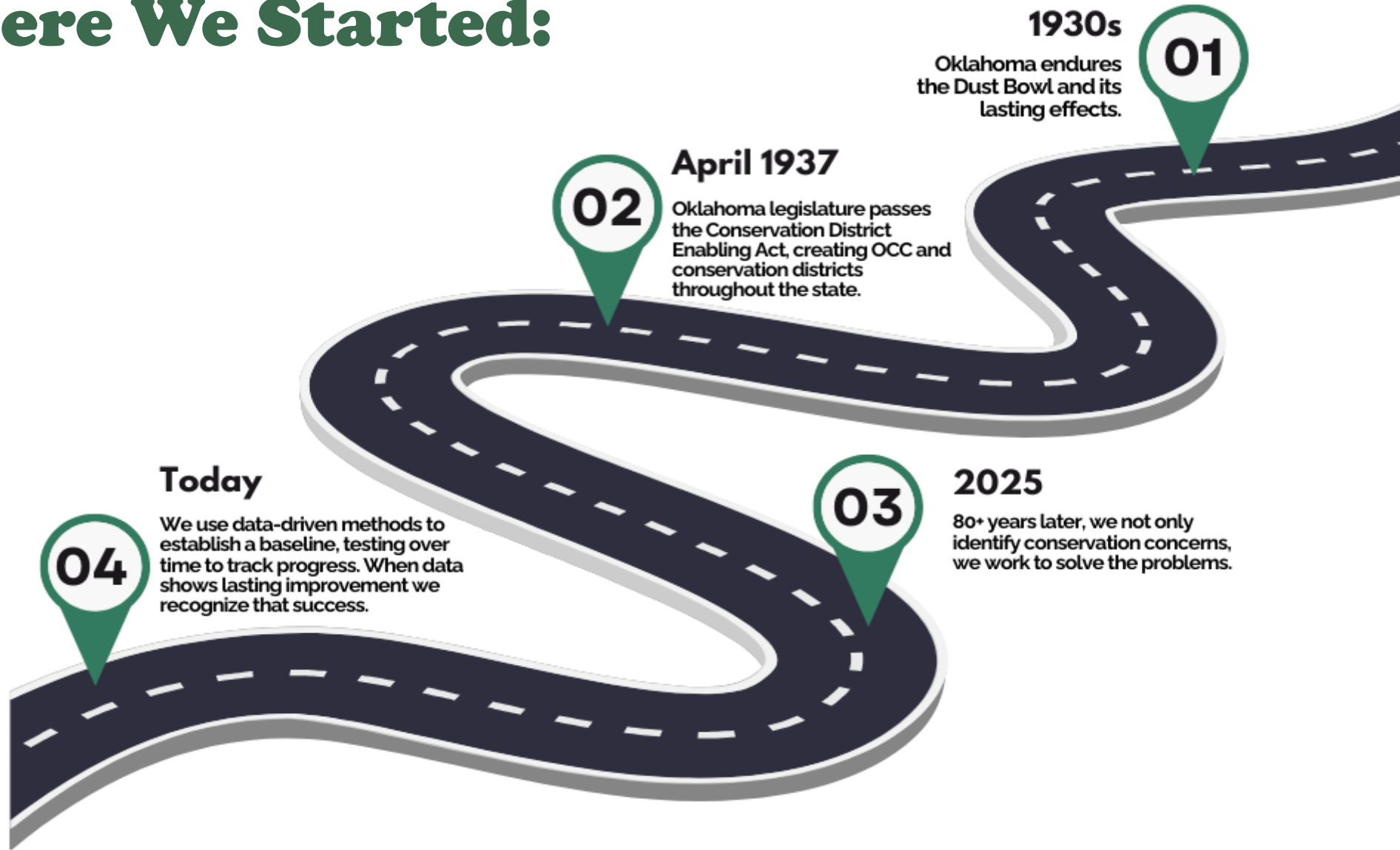
Problem-Solving with Proven Results



Presented by: Trey Lam, Executive Director

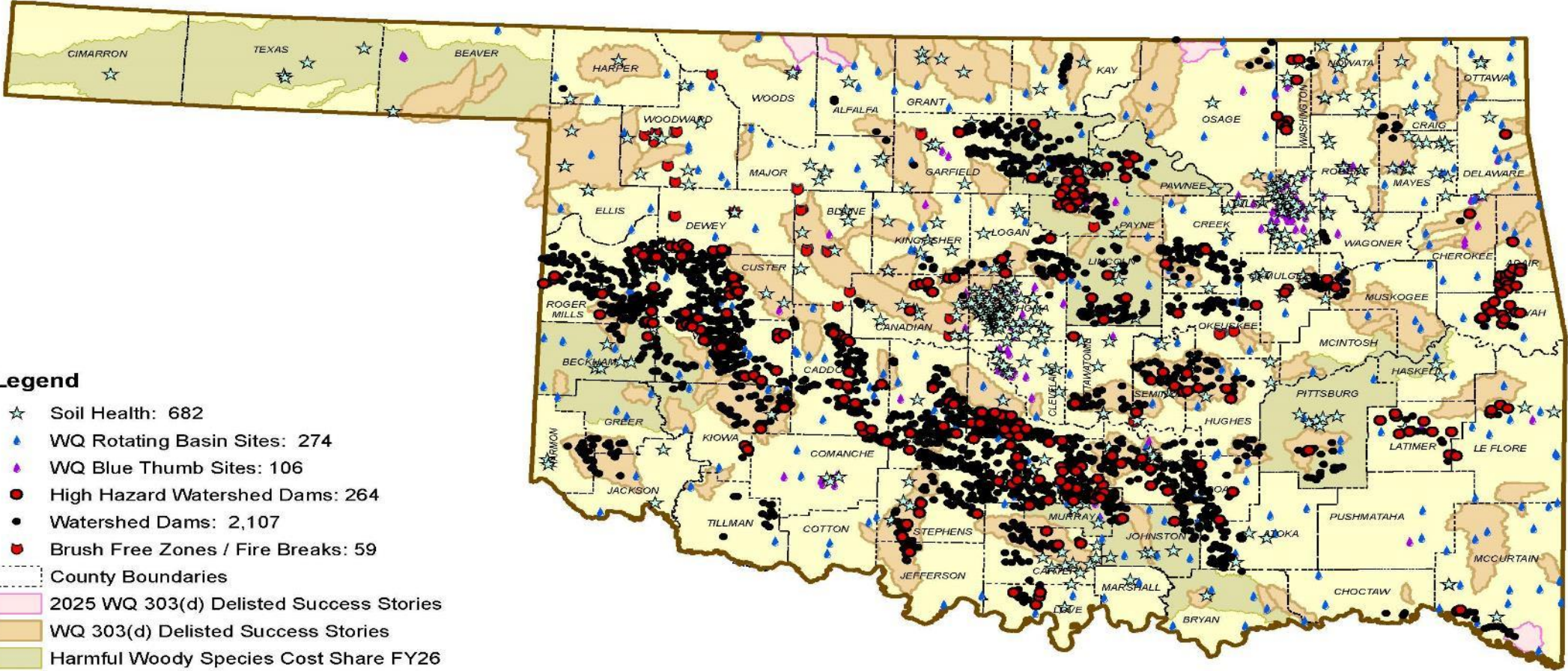


Where We Started:



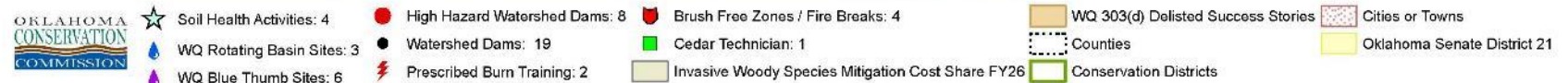
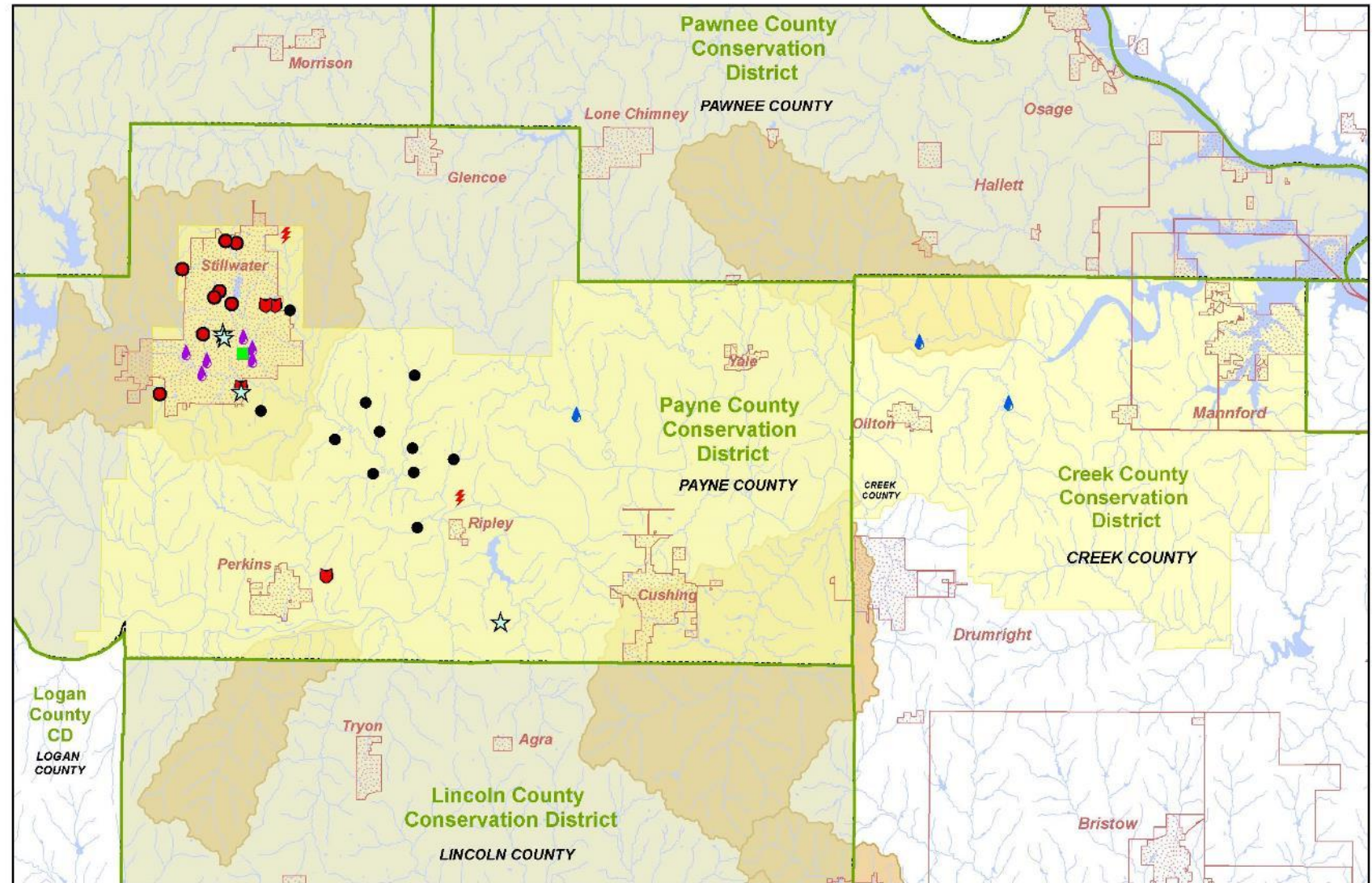
State Conservation Impacts

A Data-Driven Approach



Senate District 21 Conservation Impacts

**Senator Randy
Grellner,
District 21**



Map Prepared by the OK Office of Geographic Information, 2025



Water Quality Division Sets the Blueprint

The Water Quality Division has developed a strategy to monitor small feeder streams on a rotational basis to determine the impacts of non-point source pollution on the water resources of the state.

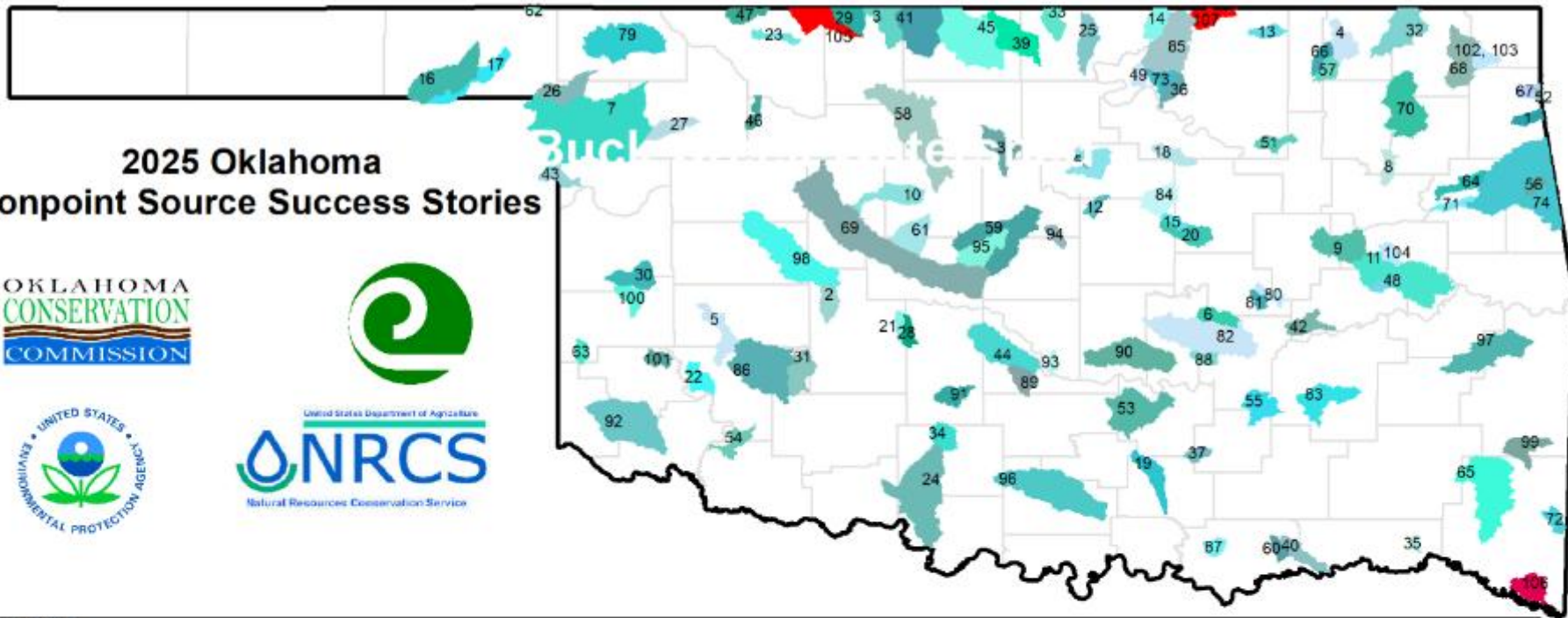
Each year, monitoring begins in one basin, where streams are monitored for two years. Using this rotation, all basins and 250 streams are monitored every five years, and then the rotation begins again.

Monitoring is used to:

- Determine the beneficial use status of streams
- Collect information on sources of pollution
- Evaluate success of past and current restoration projects
- Gather data for planning and implementing future projects



2025 Oklahoma Nonpoint Source Success Stories



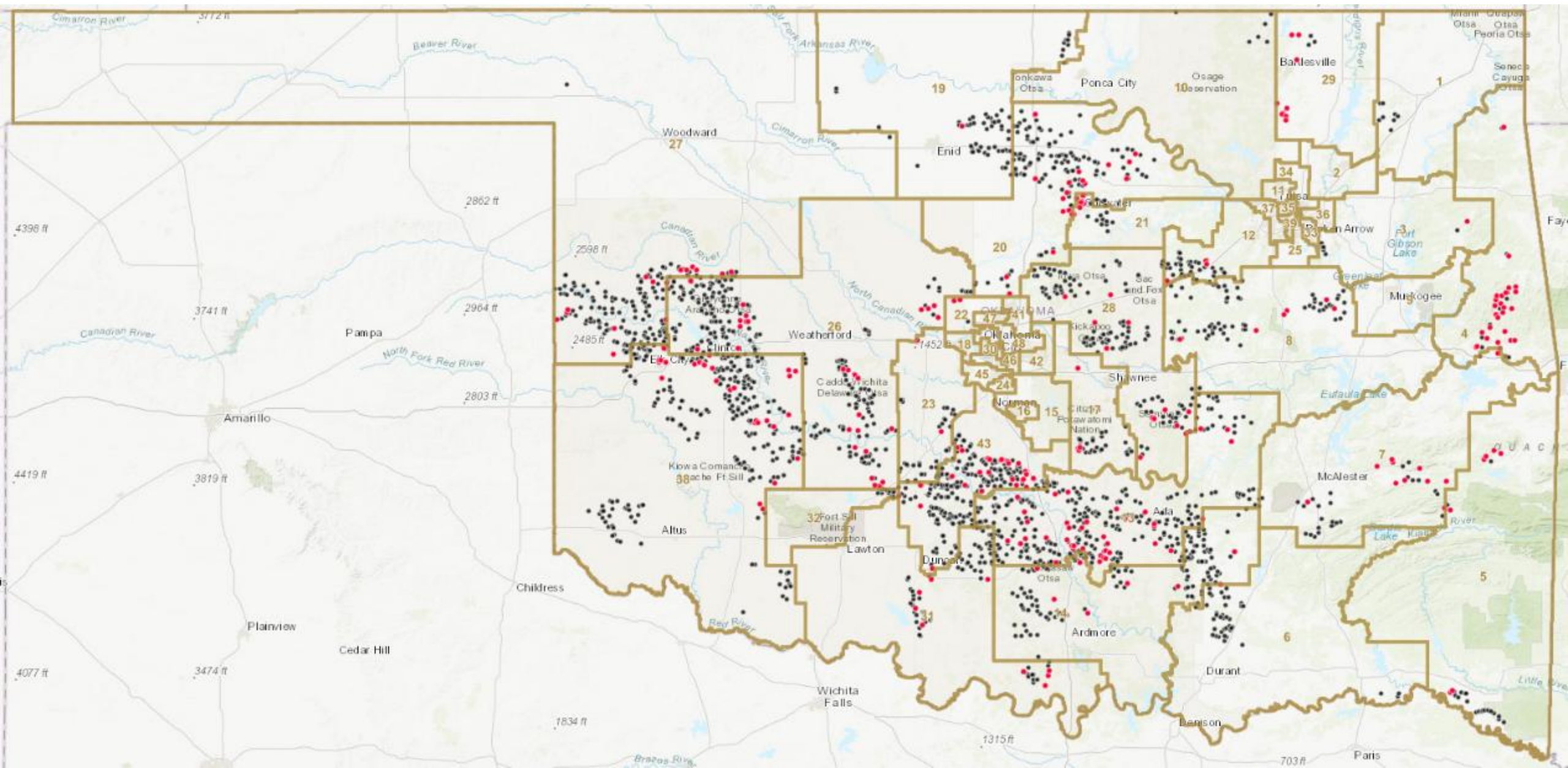
Legend

County Boundaries

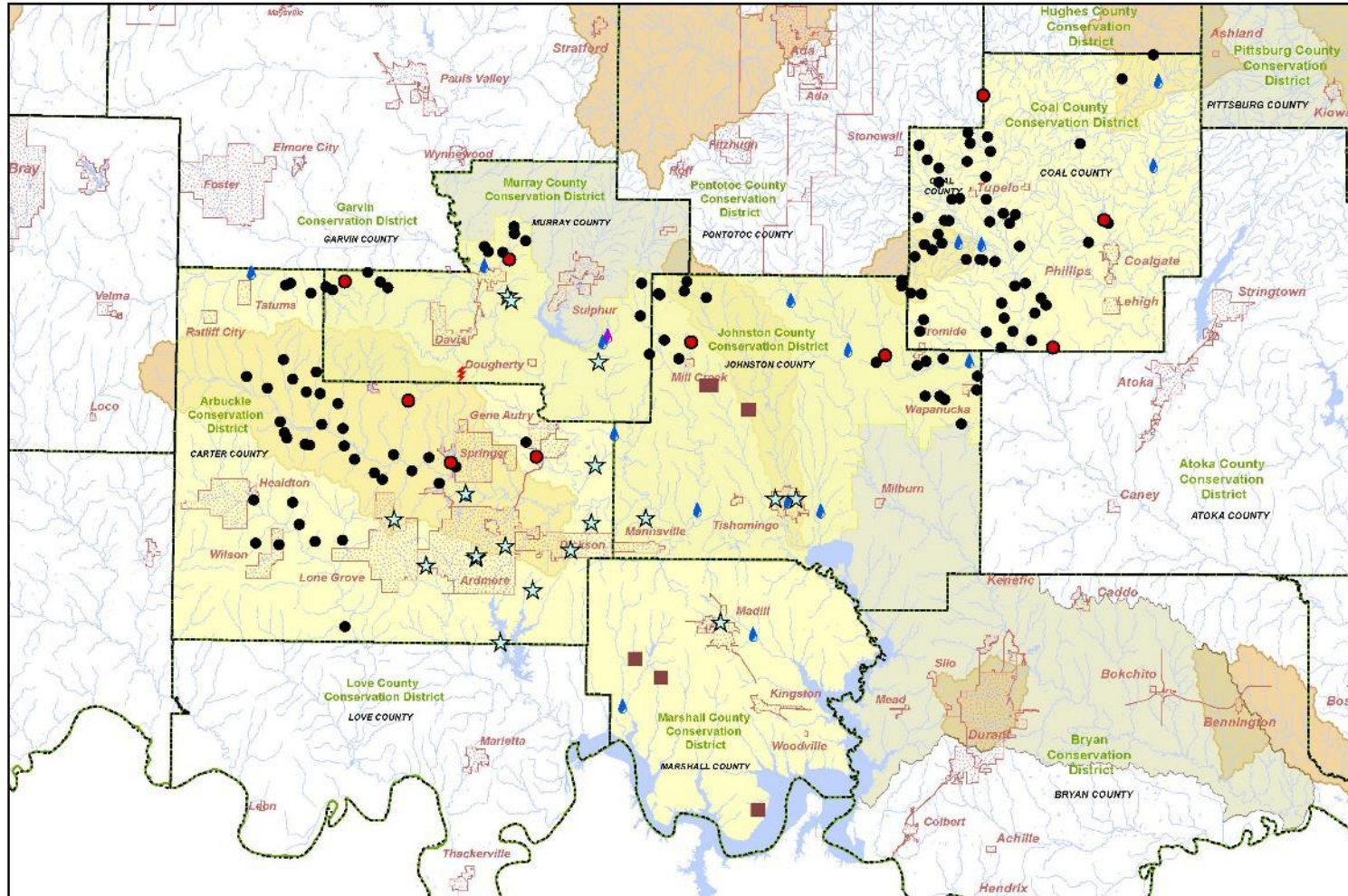
Success Story Watersheds

Alabama Creek (81)	Canadian Sandy Creek (53)	Elk Creek (48)	Main Creek (46)	Salt Creek (Pott. Co.) (90)
Bad Creek (80)	Caney Boggy Creek (55)	Euchee Creek (84)	Medicine Lodge River (29)	Sandstone Creek (30)
Beaty Creek (1)	Clear Creek (Beaver Co.) (16)	Finn Creek (89)	Mill Creek (42)	Sandy Creek (3)
Beaver Creek (Jefferson Co.) (24)	Clear Creek (Harper Co.) (26)	Fish (63)	Mineral Bayou (87)	Stillwater Creek (50)
Beaver Creek (Osage Co.) (14)	Cloud Creek (9)	Fourteenmile Creek (64)	Mission Creek (13)	Stinking Creek (Caddo Co.) (21)
Big Creek (32)	Commission Creek (43)	Glover River (65)	North Canadian River (69)	Stinking Creek (Kiowa Co.) (31)
Big Eagle Creek (99)	Coon Creek (94)	Goose Creek (37)	Nonwood Creek (108)- NEW!	Sulphur Creek (60)
Bird Creek (35)	Cooper Creek (10)	Gray Horse Creek (38)	Otter Creek (Garfield Co.) (38)	Tepee Creek (22)
Bird Creek (Hughes Co.) (88)	Cottonwood Creek (59)	Hogshooter (66)	Otter Creek (Tillman Co.) (54)	Timber Creek (100)
Bitter Creek (33)	Cottonwood Creek (59) Deer Creek (95)	Honey Creek (52)	Peaceable Creek (83)	Turkey Creek (58)
Bois d'Arc (25)	Crooked Creek (Beaver Co.) (62)	Honey Creek (67)	Peacheater Creek (56)	Turkey Creek (Jackson Co.) (92)
Brazil Creek (97)	Crooked Creek (Grant Co.) (41)	Horse and Little Horse Creeks (102-103)	Pennington Creek (19)	Turkey Creek (Woods Co.) (23)
Buck Creek (107)- NEW!	Curl Creek (57)	Illinois River (74-78)	Pond Creek (45)	Walnut Creek (44)
Buffalo (Harper Co.) (79)	Deer Creek (39)	Indian Creek (27)	Pryor Creek (70)	Wewoka Creek (82)
Bull Creek (8)	Deer Creek (98)	Ionline Creek (28)	Rainy Mountain Creek (86)	Whitegrass Creek (40)
Butler Creek (104)	Delaware Creek (51)	Lagoon Creek (18)	Ranger Creek (71)	Wildhorse Creek (34)
Caddo Creek (96)	Dirty Creek (11)	Lake Creek (2)	Roaring Creek (91)	Willow Creek (93)
California Creek (4)	Doga Creek (49)	Lake Creek (Greer Co.) (101)	Rock Creek (72)	Winter Camp Creek (61)
Camp Creek (15)	Driftwood Creek (105)- NEW!	Little Cabin Creek (68)	Salt Creek (20)	Wolf Creek (7)
	Duckpond Creek (17)	Little Elk Creek (5)	Salt Creek (Osage Co.) (73)	
	Dugout Creek (12)	Little Wewoka Creek (6)	Salt Creek (Osage Co.) (73) (85)	

Watershed Dams & High-Hazard Watershed Dams



Senate District 14 Conservation Impacts



Impacts of Watershed Dams Benefits (Senate District 14)

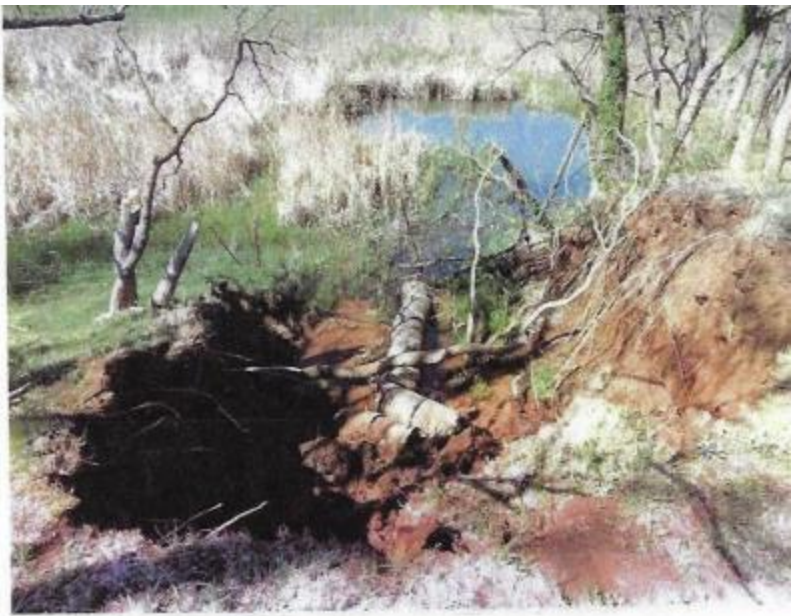
- 134 flood control dams
- \$16,638,000 in monetary benefits
- 3,922 farms and ranches benefited
- 155 bridges benefited
- 8,071 acres of wetlands enhanced or created
- 1,636,988 tons of soil averted



☆ Soil Health Activities: 41 ● High Hazard Watershed Dams: 10 ⚡ Prescribed Burn Training: 1 ⬜ Counties 🟡 Oklahoma Senate District 14
 💧 WQ Rotating Basin Sites: 17 ● Watershed Dams: 129 🟡 Invasive Woody Species Mitigation Cost Share FY26 🏘 Cities or Towns
 🟡 WQ Blue Thumb Sites: 1 🟡 Unpaved Roads Projects: 6 🟡 WQ 303(d) Delisted Success Stories 🟢 Conservation Districts

Map Prepared by the OK Office of Geographic Information, 2025

0 10 20 Miles



Barnitz #30



Barnitz #30



Sugar Creek Site 23



Sugar Creek Site 23

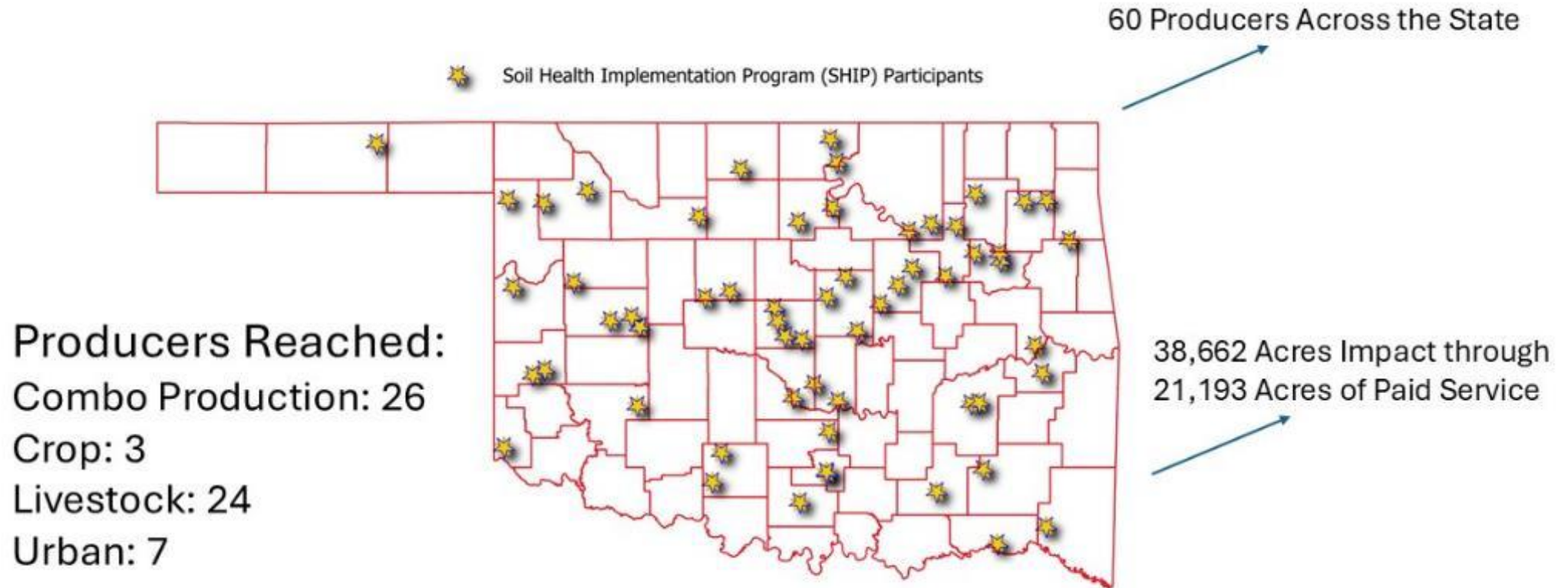
Watershed Dam Operations & Maintenance



Sugar Creek Site 23

Healthy Soil-Clean Water = Healthy Food-Healthy People

Soil Health Implementation Program (SHIP)



Alfalfa County District 2 – Unpaved Roads Project

Project addressed a highly erodible area of the road where a large drainage area washed out the roadway after every rainfall event causing the road to close until material can be hauled back in and placed.

Alfalfa County D2 installed 3 half pipe culverts (repurposed railroad tanker cars), increased the elevation of the road, improved the drainage, and placed gravel on the road surface with compaction.



Before

★ 72 Unpaved Roads
Projects Completed
Statewide

★ \$4,750,000 state funding provided by
OCC

★ \$7,250,000 in-kind match from
County Commissioners

After



Terry Peach Monitoring Project

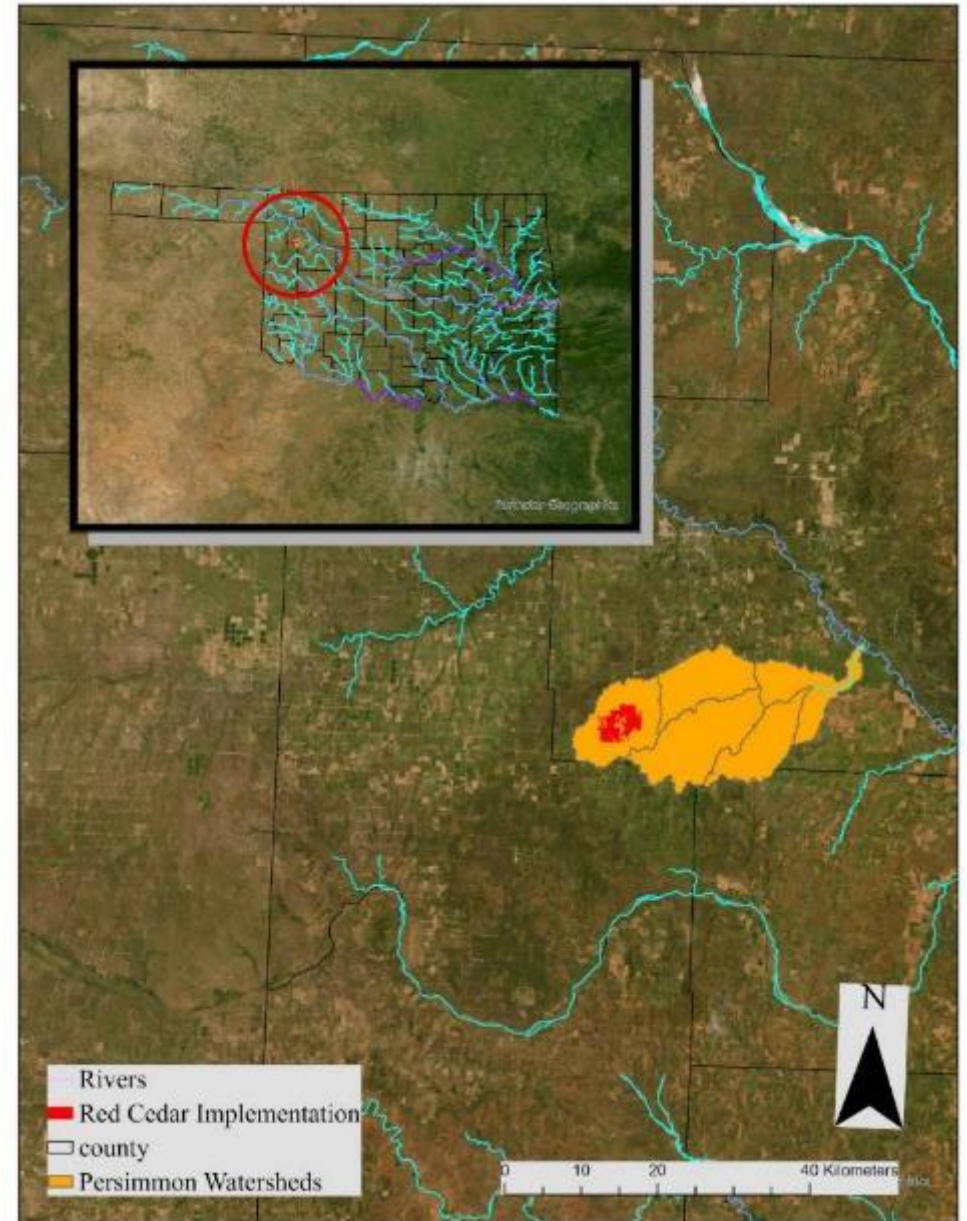
Project Goals:

Assess the hydrologic, vegetation and soil health changes following removal of the invasive woody species Eastern Red Cedar.



Study Area

- ❑ Persimmon Creek Watershed
 - ❑ Tributary of North Canadian River
 - ❑ 110,000 acres
 - ❑ Goal of 1,000 acres of removal in headwaters





Water Monitors



Mulched Cedars

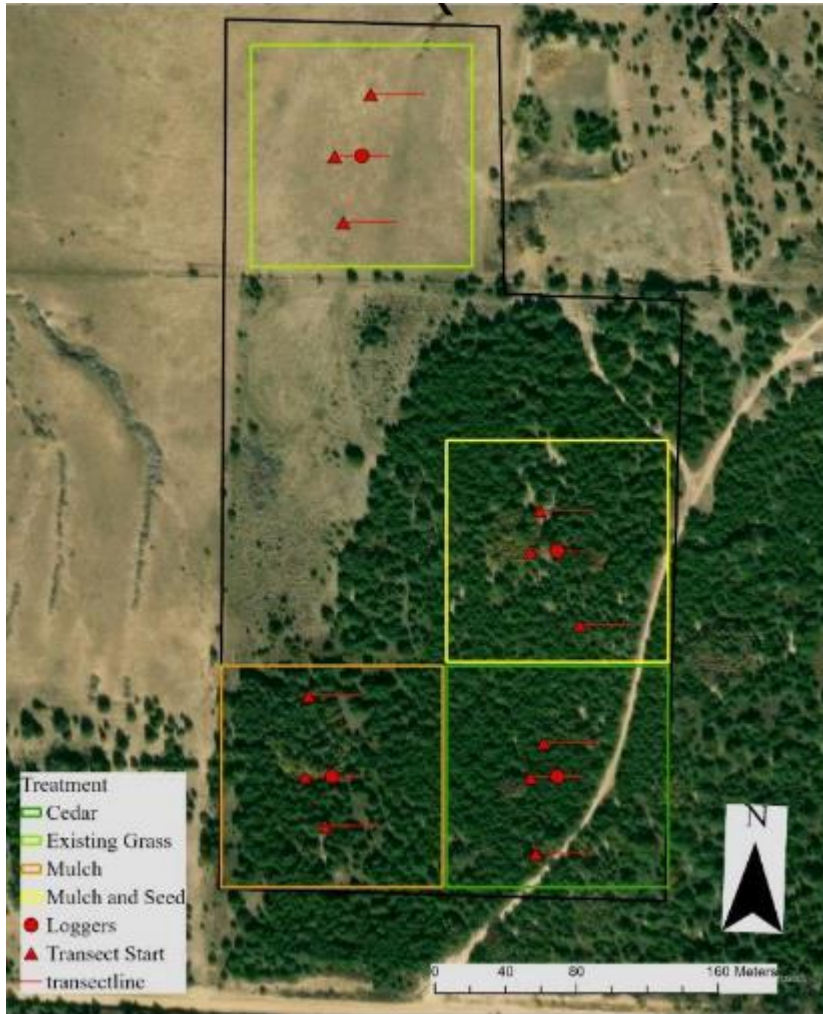


**Wildlife/Soil
Health Benefits**



Study Design

- ❑ Randomized block design
- ❑ 4 blocks with 4 treatments
 - ❑ Cedar Control
 - ❑ Existing Grass
 - ❑ Cedar removal- mulch
 - ❑ Cedar removal- mulch and seed





Study Design: Vegetation & Soil Health



Pre- and Post Monitoring



Vegetation

- Composition
- Diversity
- Cover



Soil Health

- Infiltration
- Soil chemistry
- Worm activity

Study Design: Hydrology

- ❑ Continuous soil moisture monitoring
 - ❑ 60 cm depth in each treatment
 - ❑ Variability in cedar plots
- ❑ Weather Station
 - ❑ Precipitation
 - ❑ Evapotranspiration
- ❑ Modeled improvements in groundwater recharge and discharge

$$\textit{Precipitation} - ET - \Delta S = G + Q$$



Preliminary Data (May – Sep 2025)

Depth	Cedar	Inter canopy	Grass	Mulch	Seed
0-15	9.1%	13.7%	15.9%	11.7%	16.2%
15-30	9.3%	13.5%	22.1%	13.6%	19.1%
30-45	11.1%	10.7%	22.2%	14.9%	20.6%
45-60	12.1%	12.1%	22.3%	19.3%	22.4%
Gallons / Acre of Water more than Cedar			51,488	14,560	44,832

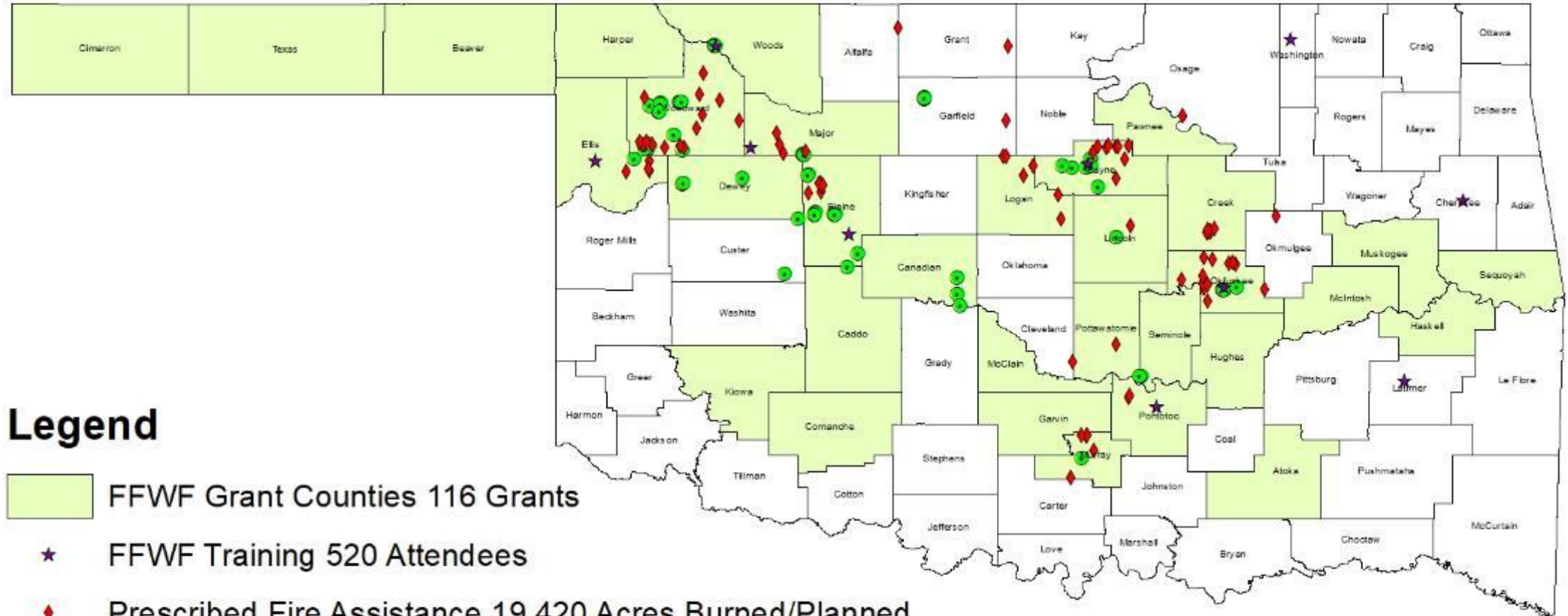
- Caveats
- Cause
- Timeframe
- Vegetation
- Regionality
- Mulch
- Q and G

Moving Forward

- Continuous soil and weather monitoring
- Yearly vegetation and soil health monitoring
- Monitor Persimmon Creek for flow, chemistry and biology
- Track changes in vegetation, soil health and hydrology



Fighting Fire with Fire/Prescribed Fire Assistance



Legend

- FFWF Grant Counties 116 Grants
- ★ FFWF Training 520 Attendees
- ◆ Prescribed Fire Assistance 19,420 Acres Burned/Planned
- Wildfire Mitigation Areas 50 Miles

0 25 50 100 150 Miles

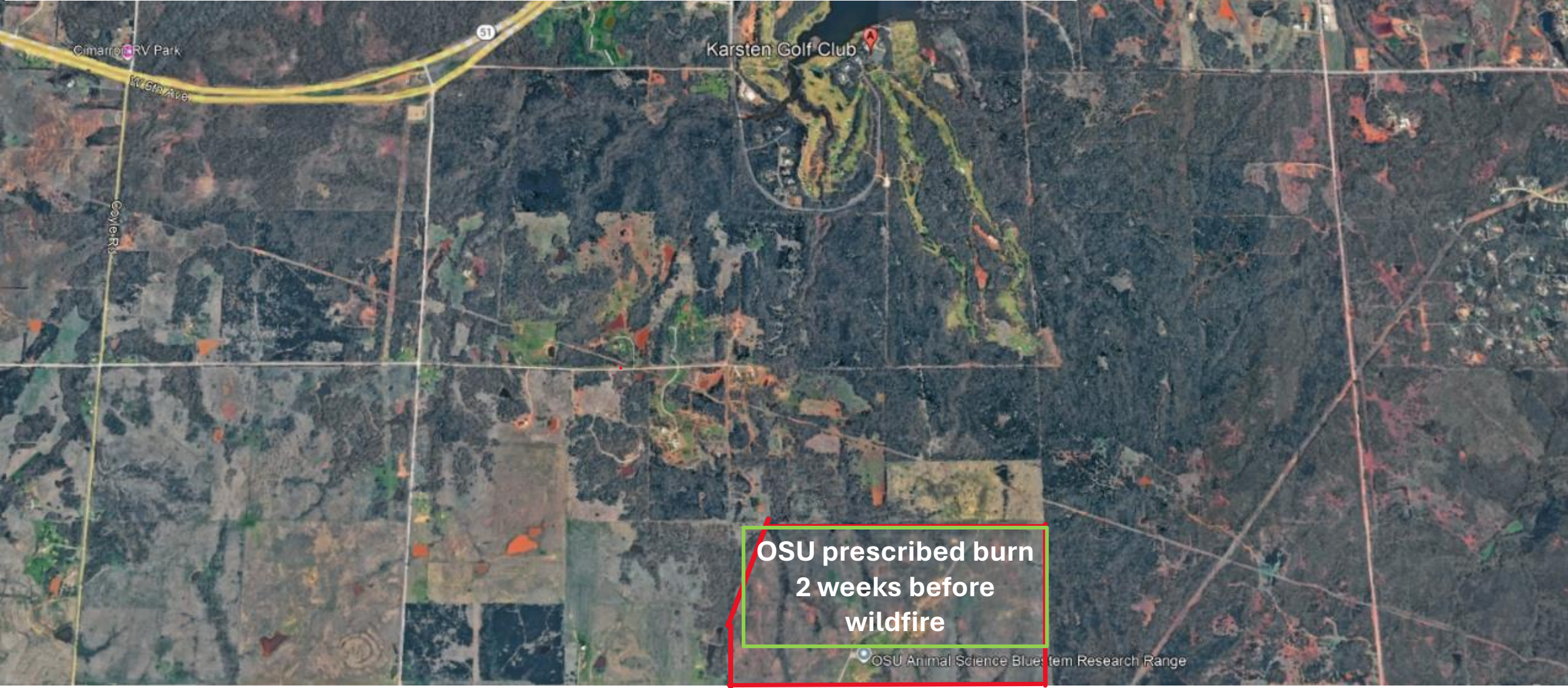
Oklahoma Conservation Commission
December 15, 2025



Karsten Creek
OSU prescribe fire saves homes and Country Club

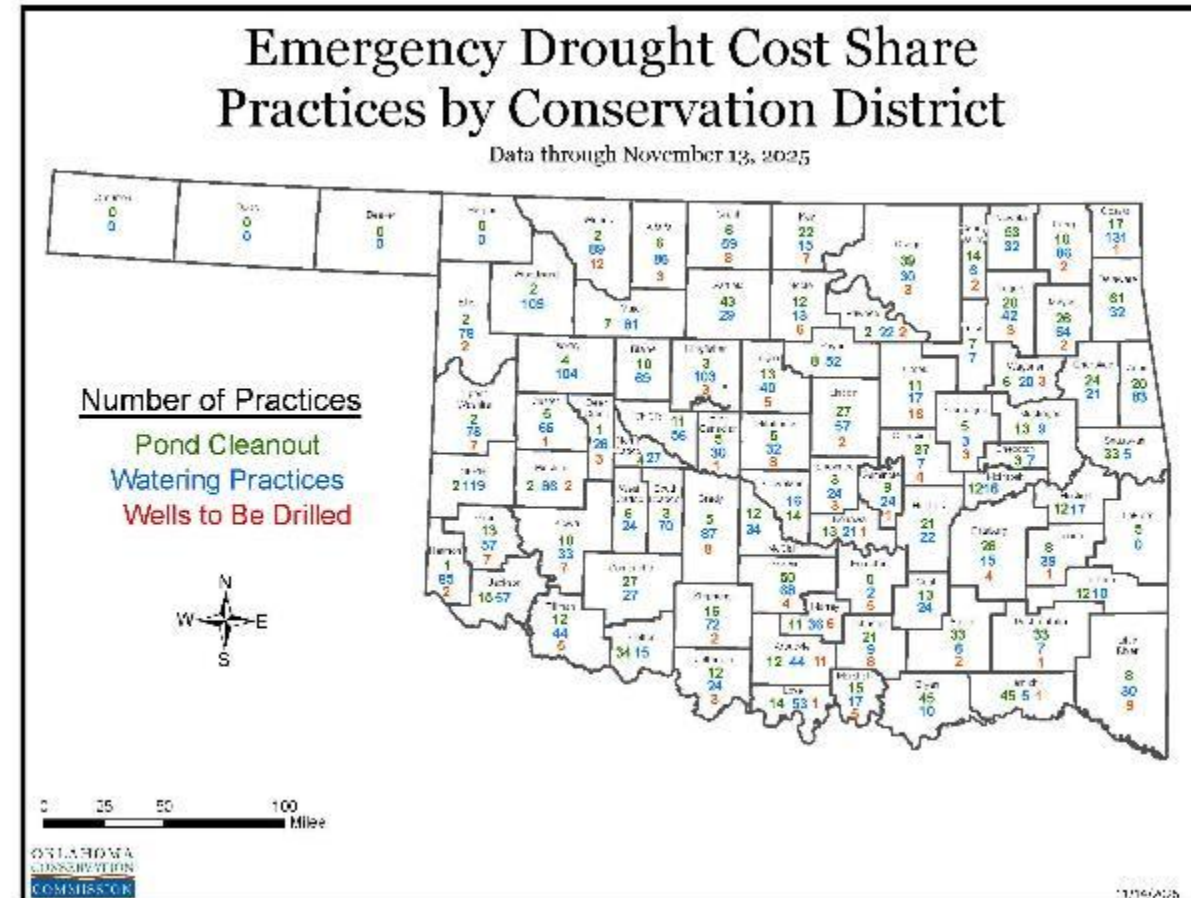
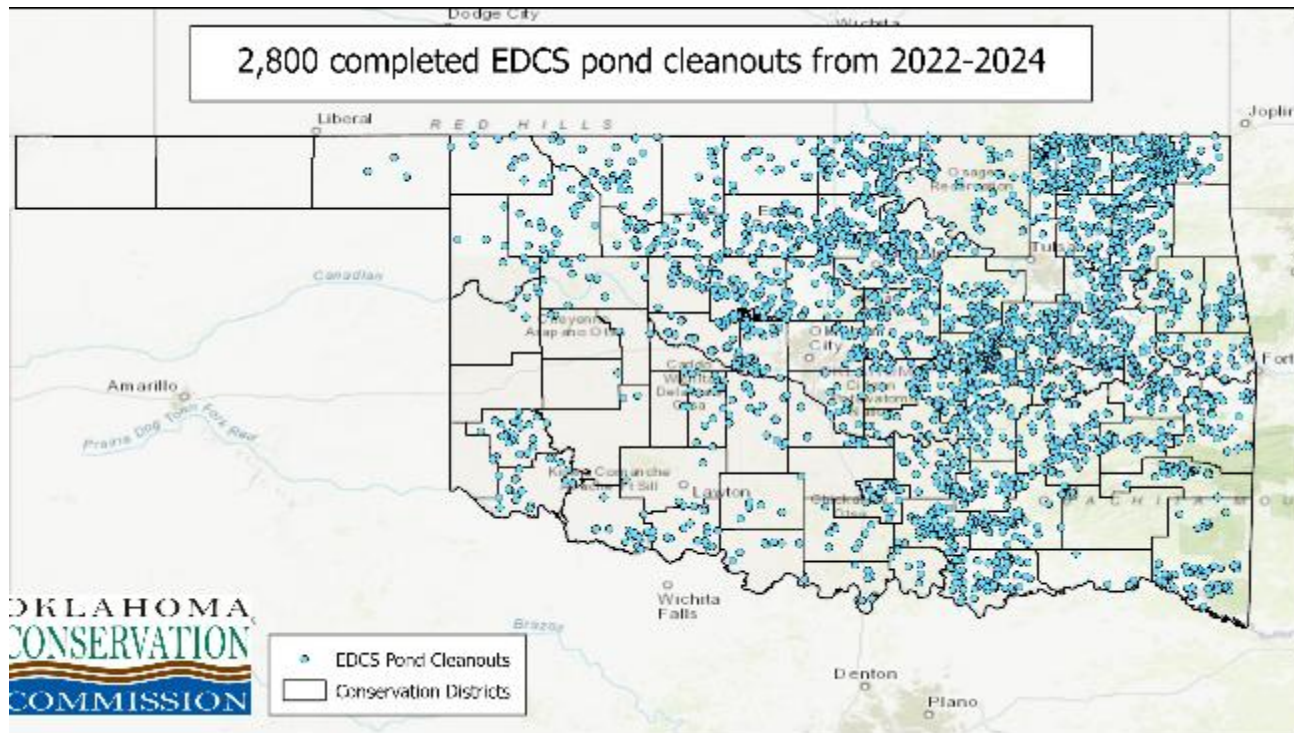
Legend
Karsten Golf Club
OSU Animal Science Bluestem Research Range

Karsten Creek Burn – March 2025



**OSU prescribed burn
2 weeks before
wildfire**

OSU Animal Science Bluestem Research Range



19,515,027.90 Cubic yards of pond sediment was removed in the drought program from 2022- 2025. This allows more room in ponds for water.

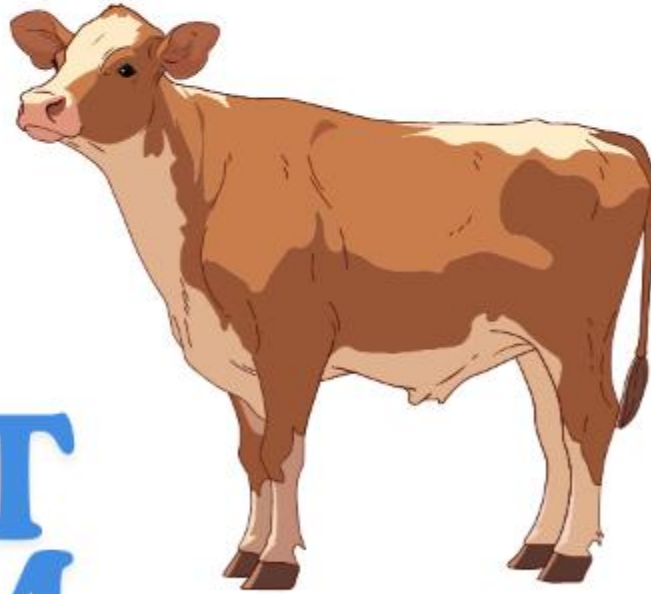
3,942,035,685 gallons of new water storage was created.



2025

DROUGHT PROGRAM

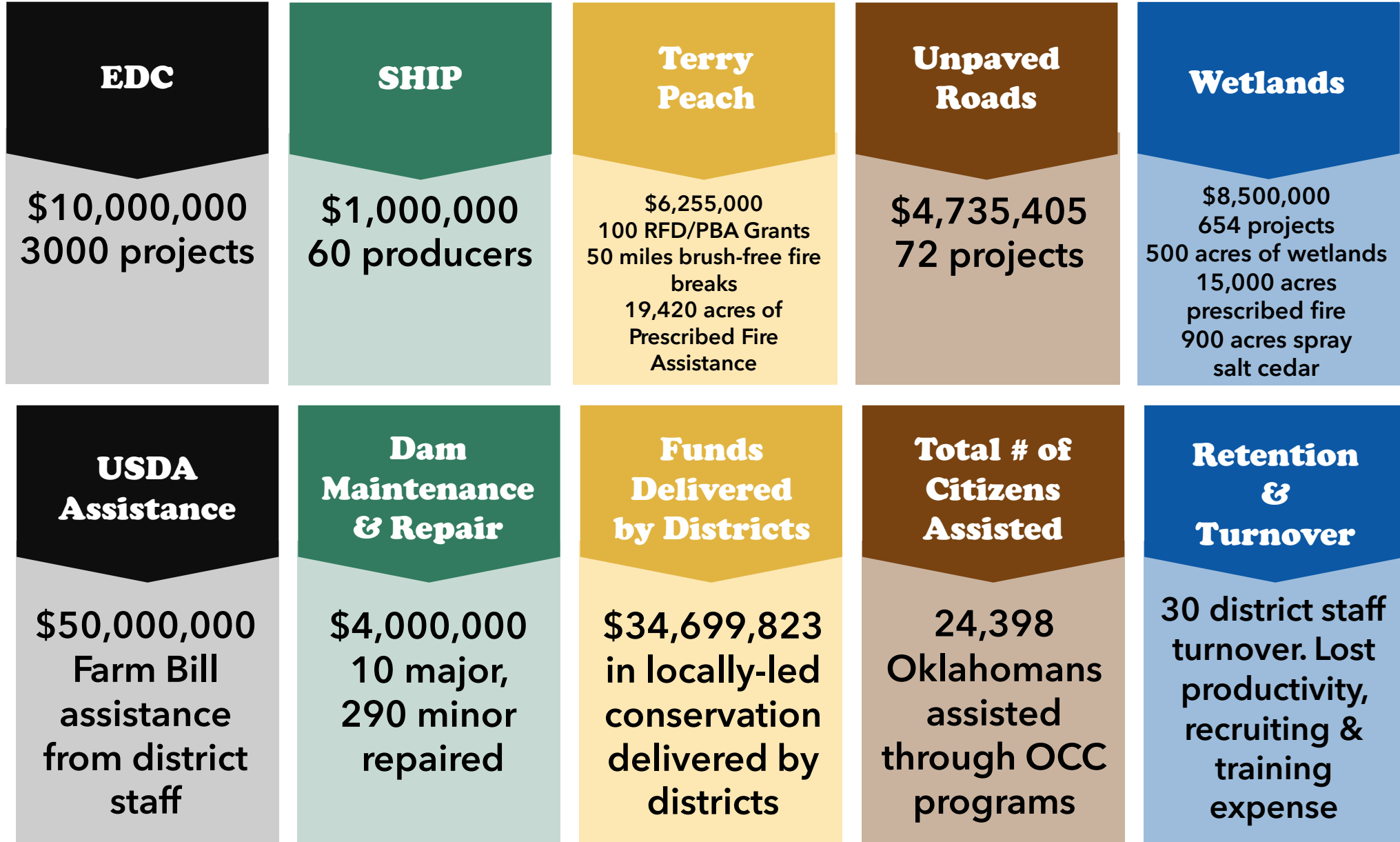
A herd of **120 cattle at 1200-pounds** each, needs about **1,920 gallons of water a day**. Through this program **2.1 millions days of water was developed**. Saving ranchers from being forced to sell **\$2,700,032,000 in assets** (cows).



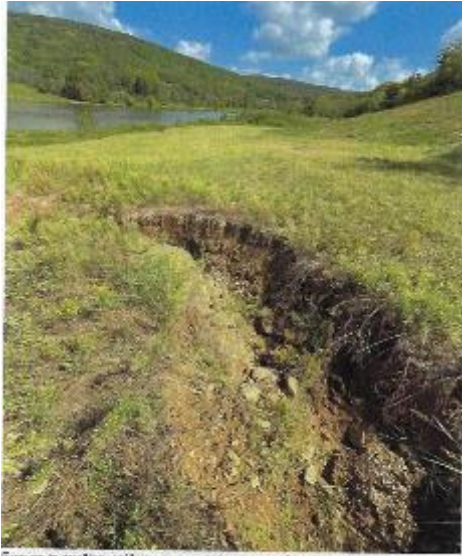
3,942,035,685 gallons of water is roughly the size of **Lake Elmer Thomas in Comanche County**. This would be enough to supply the town of **Broken Arrow, OK for one year**.



Conservation Program Funds Processed & Delivered by District & Agency Staff:



Budget Request FY2027



Critical Dam Repairs
\$3,000,000
Recurring



Unpaved Roads Erosion
\$1,275,000
Recurring



**Boots on the Ground:
Local Conservation
Delivery**

\$1,865,731
Recurring



**Woody Species
Control Program
- Statewide
Expansion**

\$2,500,000
Recurring