

Energy Interim Study

Study 25-061

Senator Casey Murdock

Submitted by **Destinee Weeks,**
Energy Professional

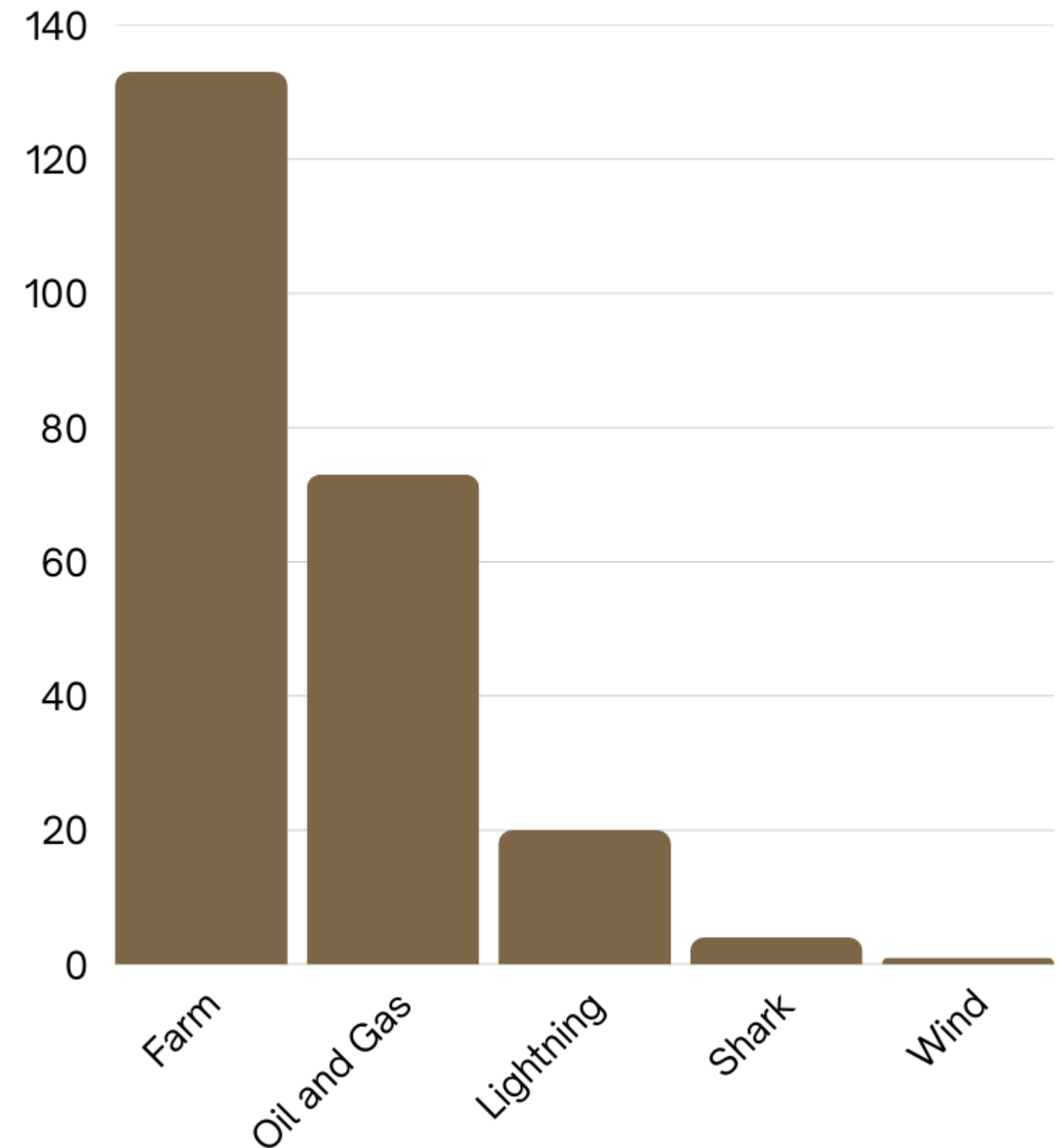
9.03.2025

Claims

| | |
|----------------------------|---|
| Health Risk | The National Library of Medicine said, “Based on the findings and scientific merit of the research conducted to date, it is our opinion that the weight of evidence suggests that when sited properly, wind turbines are not related to adverse health effects. This claim is supported (and made) by findings from a number of government health and medical agencies and legal decisions.” |
| Land Value Impact | National Association of Realtors - “Event study estimates also reveal important dynamics in the evolution of home values, with property values first declining following project announcement, and then recovering post project construction, with property value impacts becoming relatively small (~ 2%) and statistically insignificant 9 years or more after project announcement. Our results are primarily driven by wind projects located in "urban" counties in metro areas with populations greater than 250,000. |
| Noise Pollution | At its base, the sound is similar to a tractor, but by the time you are 1,000 feet or more away—which is the minimum industry-standard setback required for siting near homes—the noise drops to around 35–45 decibels , comparable to a refrigerator hum or the background rustle of leaves. For context, normal conversation is nearly twice as loud at about 60 decibels. |
| Wildlife Impact | In 2019, the Renewable Energy Wildlife summarized: Wind turbines account for well under 0.1% of human-caused bird deaths. Regulations (like the Migratory Bird Treaty Act and Bald & Golden Eagle Protection Act) require wind companies to monitor and mitigate impacts. Research shows cattle, sheep, horses, and wildlife like deer generally ignore turbines once construction is over. |
| Insufficient Wind Resource | Larger wind turbines allow for better placement of turbines in lower wind speed areas. In Eastern Oklahoma the interconnect cost is much more affordable, allowing for profitable projects. |
| State-wide Desire | Every single county in Oklahoma has a wind or solar lease filed of record. |

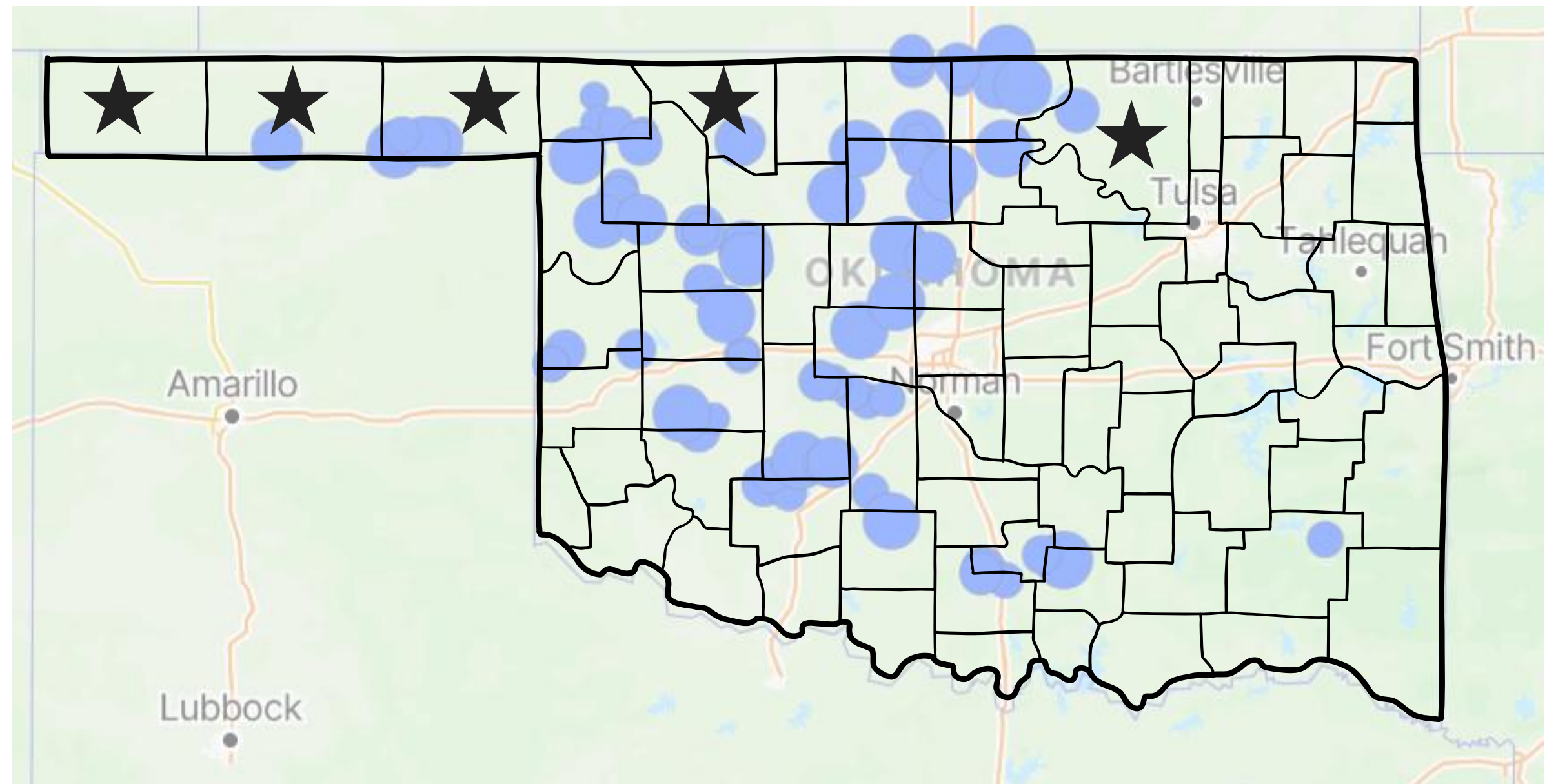
Fatalities

- Bureau of Labor Statistics reports **133** fatal farm-related deaths in 2021
- Bureau of Labor Statistics reports average of **73** deaths/year from 2019-2023 related other oil and gas extraction
- National Weather Service reports **20** people/year die from lightning strikes
- Field & Stream Foundation reports average of **4.3** fatal shark attacks/year
- OSHA reports a TOTAL of 4 deaths related to wind energy from 2021-2025, averaging less than **1** death/year



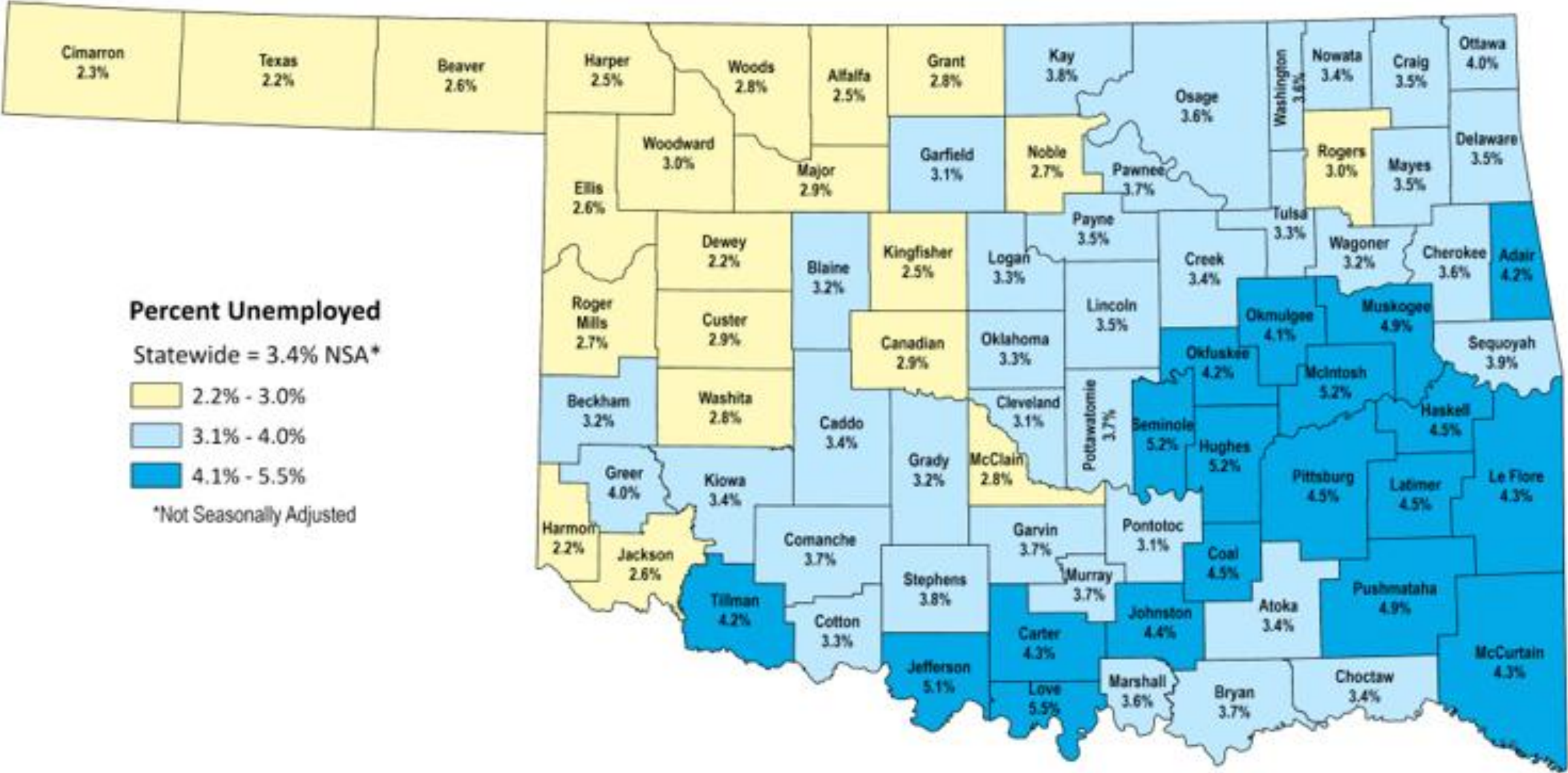
Top Counties in Total Farm Land

Cimarron
Texas
Beaver
Woods
Osage



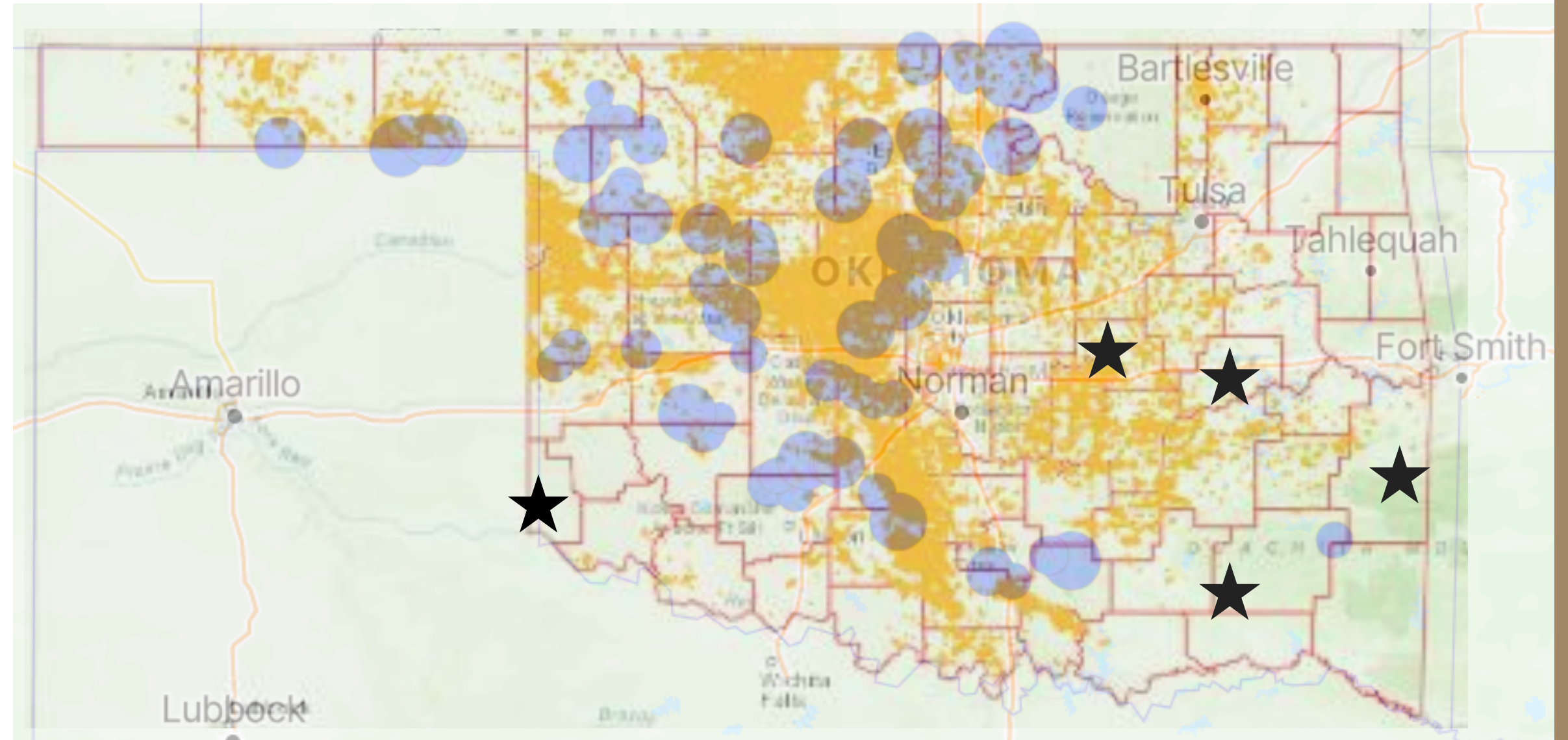
● = Operational Wind Farm

County Unemployment Rates



Highest Poverty in Oklahoma

Okfuskee
Pushmataha
McIntosh
LeFlore
Harmon



● = Operational Wind Farm

Setbacks

Major County, OK

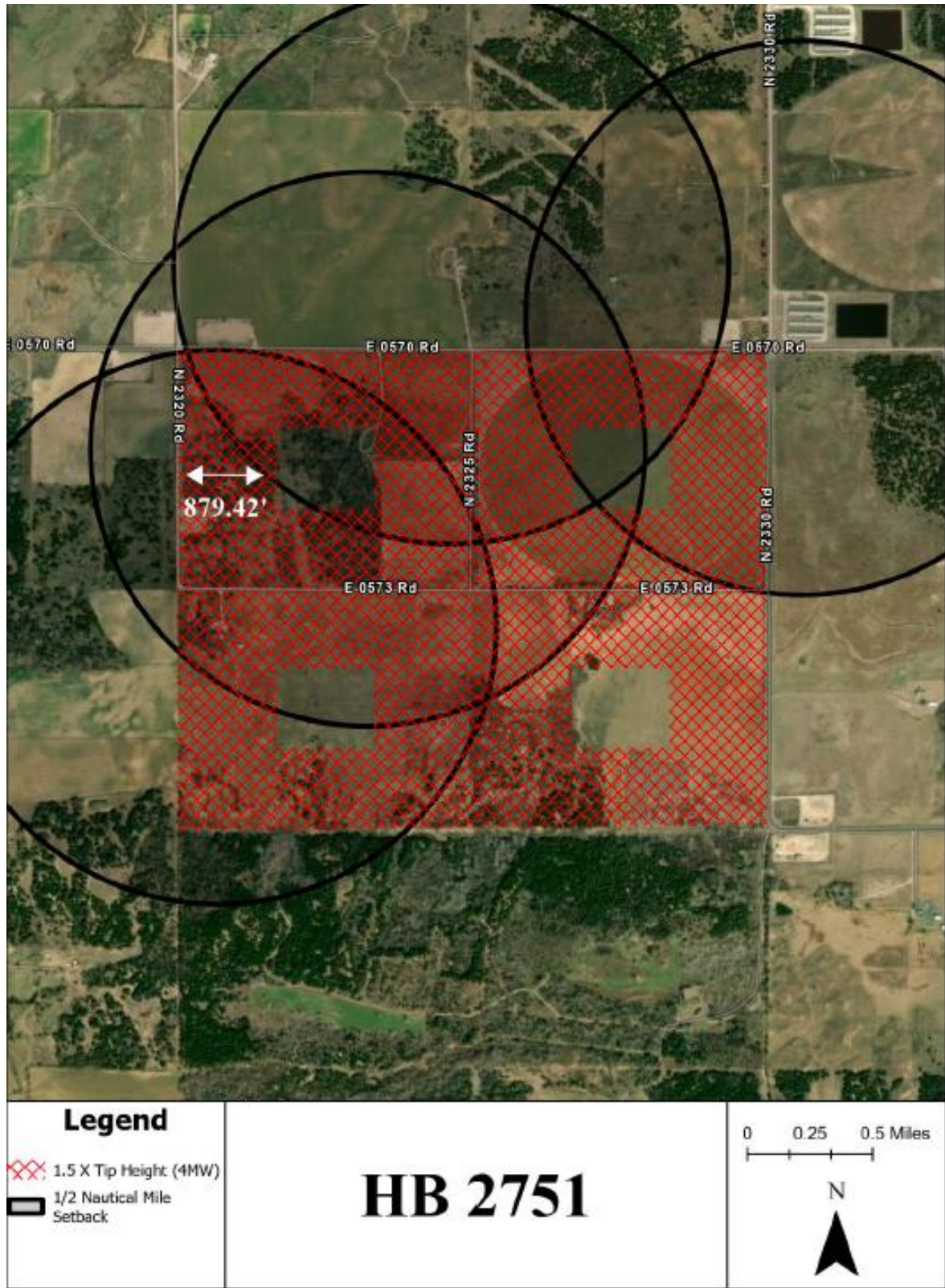
VS

The Surface Damage Act, (52 Okl.St.Ann. § 318.5)
Oklahoma is one of the few states that grant operators the right to use the surface by any means necessary for oil and gas production. A surface owner could own ZERO minerals in a section (very common) and have a well less than 50' from their house that they never approved or received any payment.

Under Title 52, Oklahoma Statutes § 320.1, commonly referred to as the Well-Site Safety Zone Act, it is unlawful to locate any habitable structure within:

- A radius of 125 feet from the wellbore of an active oil or gas well; or
- A radius of 50 feet from the center of any surface equipment necessary for well operation—such as tanks, compressors, heaters, separators, or dehydrators.

125' from wellbore



Schools off Education Formula

| 66 Schools with Wind in County | |
|---|------------------|
| Total State Savings | \$112,162,076.00 |
| Cost Per Pupil - State Funding | \$4,966.00 |
| Students Enrolled off State Education Formula | 22,586 |

“

I have seen the impact of the wind energy industry on Seiling Public Schools firsthand. As a native of Northwest Oklahoma, **wind has** not only transformed the landscape but also **transformed how we are able to deliver education to our students**. Our facilities are first-class, every classroom has updated furniture, and all of our students have access to the latest technology. That's how we wish it could be in every community in our state.

”

-Dr. Kyle Reynolds
Superintendent, Seiling Public Schools

“Scam”

SCAM is a fraudulent or deceptive act or operation.

According to the **U.S. Department of Energy’s 2023 LCOE (Levelized Cost of Energy)** data:

- Onshore wind (without subsidies): about \$32–\$54 per MWh.
- Natural gas combined cycle: about \$45–\$73 per MWh.
- Coal (existing fleet): often \$65–\$120 per MWh when factoring in maintenance/retrofits.

42% of Oklahoma’s Electricity is **Wind-Generated**

Oklahoma residents enjoy electricity that's ~**25–35% cheaper** than the national average—even as most of the U.S. trends upward.



\$78.4 Million Paid Annually to Oklahoma Landowners by wind, solar, and energy storage facilities

\$27 Billion Invested in Wind, Solar, and Energy Storage Projects across Oklahoma

Helps secure **Energy Independence: Conservative Value**