

Invasive Species on ODWC Property



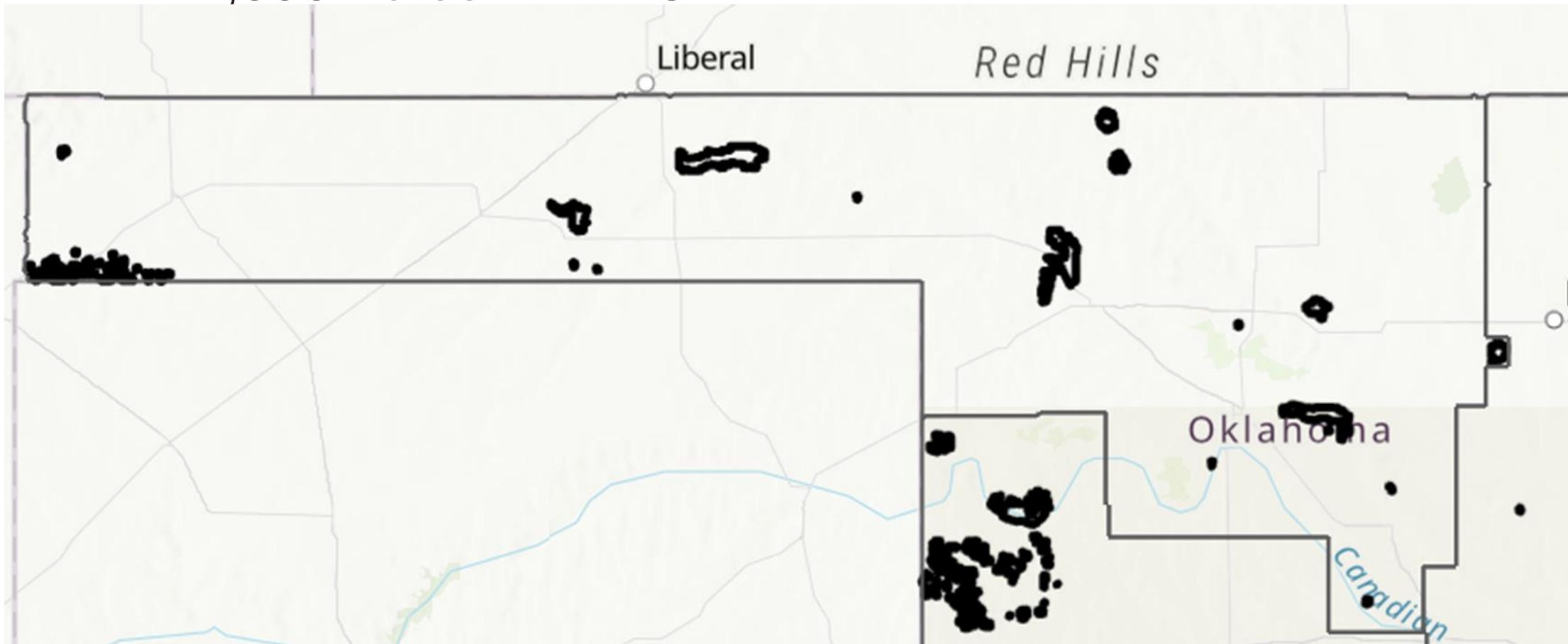
Presented by: Russ Horton, Assistant Chief of Wildlife
Oklahoma Department of Wildlife Conservation

ODWC Lands in Oklahoma

- 1,360,150 Acres – Statewide
- 86 Wildlife Management Areas (+16 Dept Lakes, 4 Hatcheries)
 - ▣ Owned (361,299)
 - WMA's (347K), Hatcheries, Department Lakes, Other*
 - ▣ Leased* (271,478 acres)
 - Timber Companies (267,038), CLO (4280.03), Private (160)
 - ▣ Licensed / Agreement (727,373)
 - License (USACE, BOR - 312,549)
 - Agreement (BOR, USFS, NPS - 414,824)

ODWC Lands NW Oklahoma

- 19 WMA's (14 staff)
- 112,836 Acres – NW OK



Invasive Species Management

- Fire
 - Prescribed Fire
 - *Wildfire

- Mechanical Treatment
 - Mastication
 - Mowing
 - Other

- Chemical Treatment

- Bio-control

Purpose

- Improve Native Upland and Riparian Habitat
- Restore / Reclaim / Manage Turkey roost sites
- Control Invasive Species
- Mitigate potential Wildfire effects

Funding

- WSFR Funds
 - ▣ Annual Apportionment
 - ▣ 3:1 Match
 - 25% non-federal match requirement
- Matching Funds
 - ▣ License Dollars
 - ▣ Partners
 - ▣ Other*

Funding

- Region Budget
 - ~\$590K annually (management)
 - Salaries (Supv, 4 Biologists, 4 Technicians, part time secretary, support staff)
- NRDA
 - \$60K Mastication on Cooper WMA
 - \$90K renovation and ERC Removal on Ft. Supply
 - \$75K herbicide treatment on Beaver River WMA
 - \$25K herbicide and mechanical treatment on Canton WMA
 - \$800K equipment (2 Tractors, 4 Skid Steer w/attachments)

Partners

□ NGO

▣ National Wild Turkey Federation

- Habitat Restoration (Canton \$40K, Sandhills \$30K, Cimarron Bluff \$14K)
- Waterways for Wildlife (Packsaddle \$100K)
 - Black Kettle (\$90K), Canton (\$40K) awarded / in process

▣ Quail Forever / Pheasants Forever

■ Equipment

- 4-wheelers / UTV's, Burn equipment / Skid Units / Turbosaw (Sandhills \$15K,)
- ERC removal Sandhills WMA (\$10K)

□ Other Agencies (USFWS, BOR, etc)

□ Other

Accomplishments

□ WMAs

▣ Rx Fire * (10730 acres)

- 10,730 acres

▣ Mechanical Treatment (9084 Acres)

▣ Chemical Treatment (5630 acres)

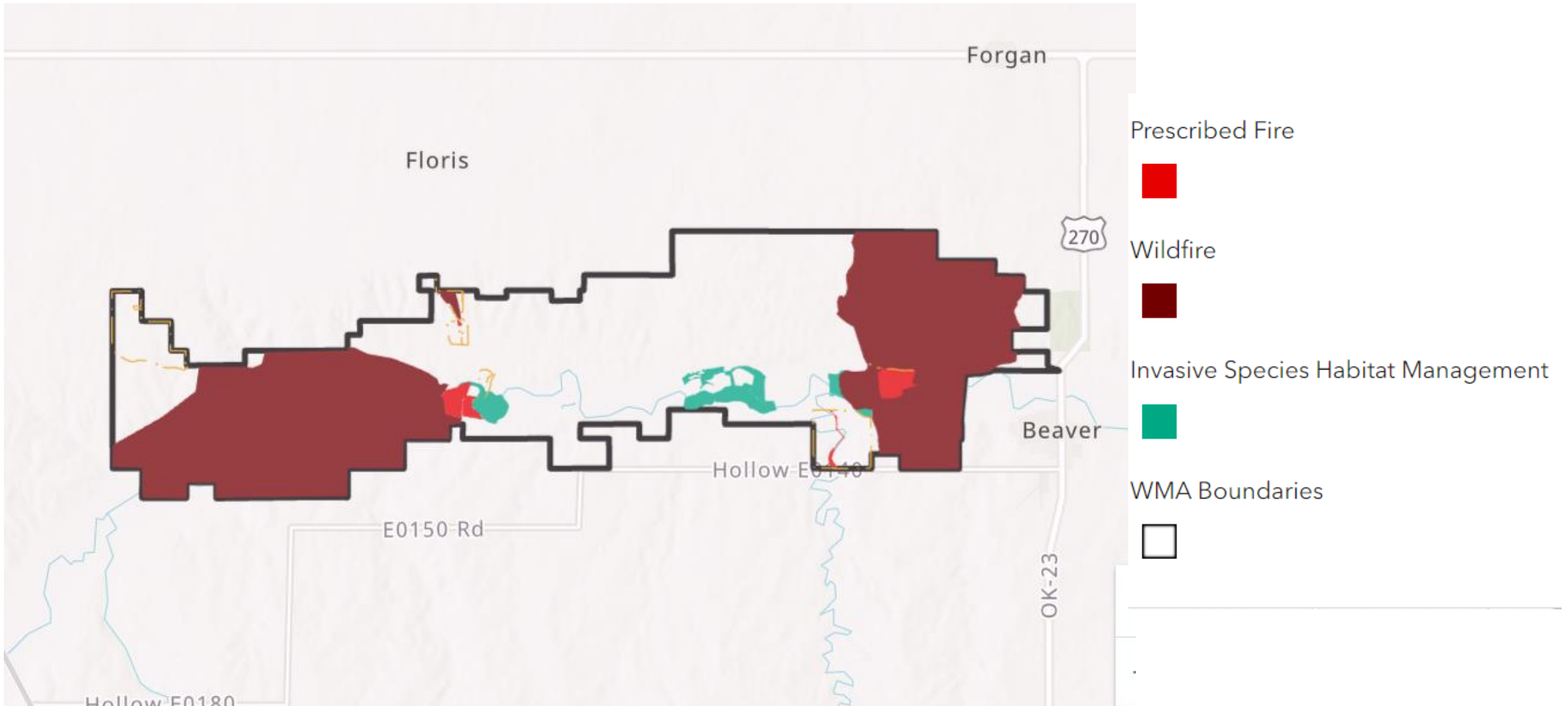
□ Private Lands

▣ *Wildlife Habitat Improvement Program (~\$100K/year ODWC and USFWS Partners for Wildlife (PFW))

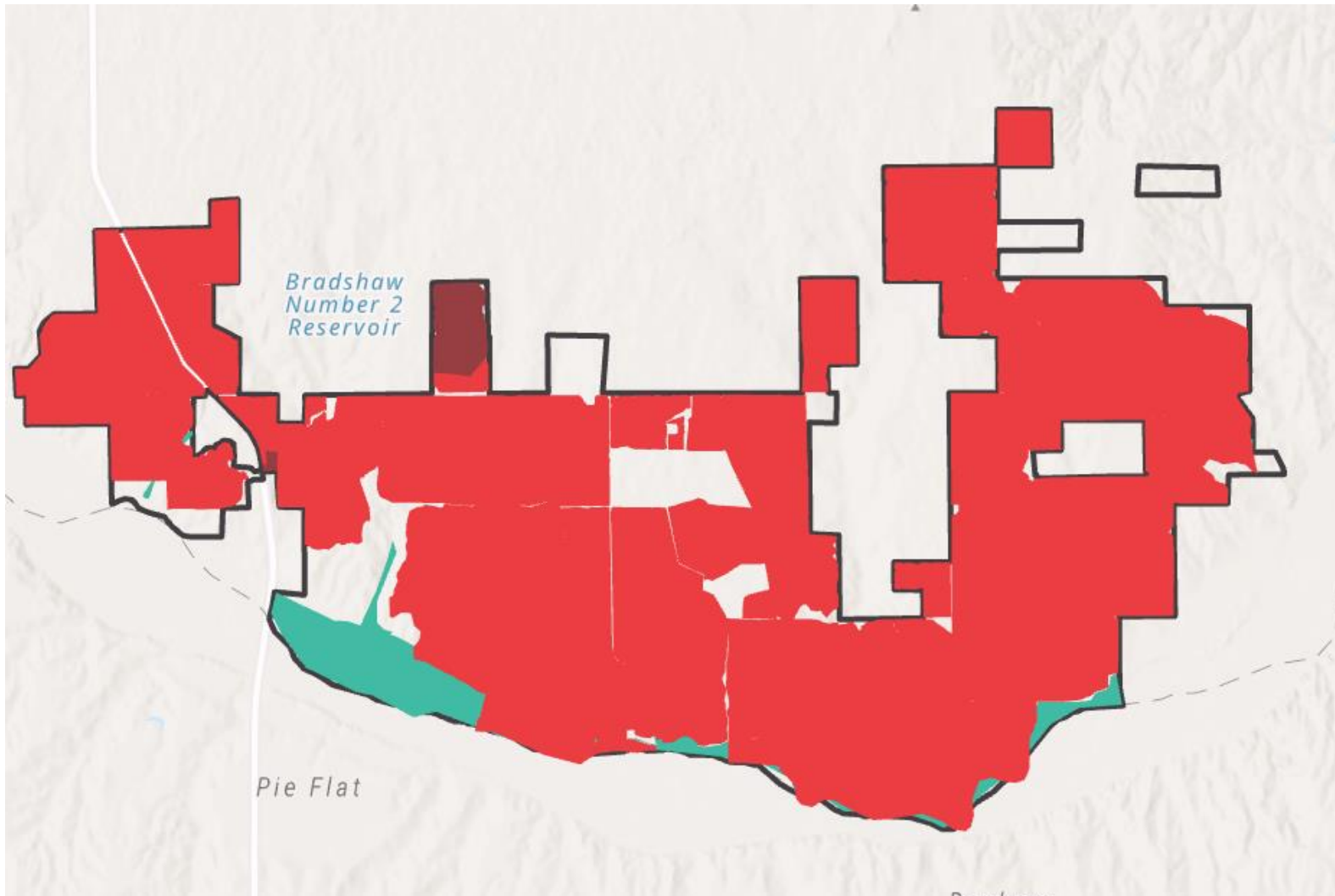
- Includes ERC removal @ 50% C/S (2646 acres / \$227K)

- *Rx Fire (42.7K acres / 20,601)

Beaver River WMA



Packsaddle WMA



Prescribed Fire



Wildfire



Invasive Species Habitat Management

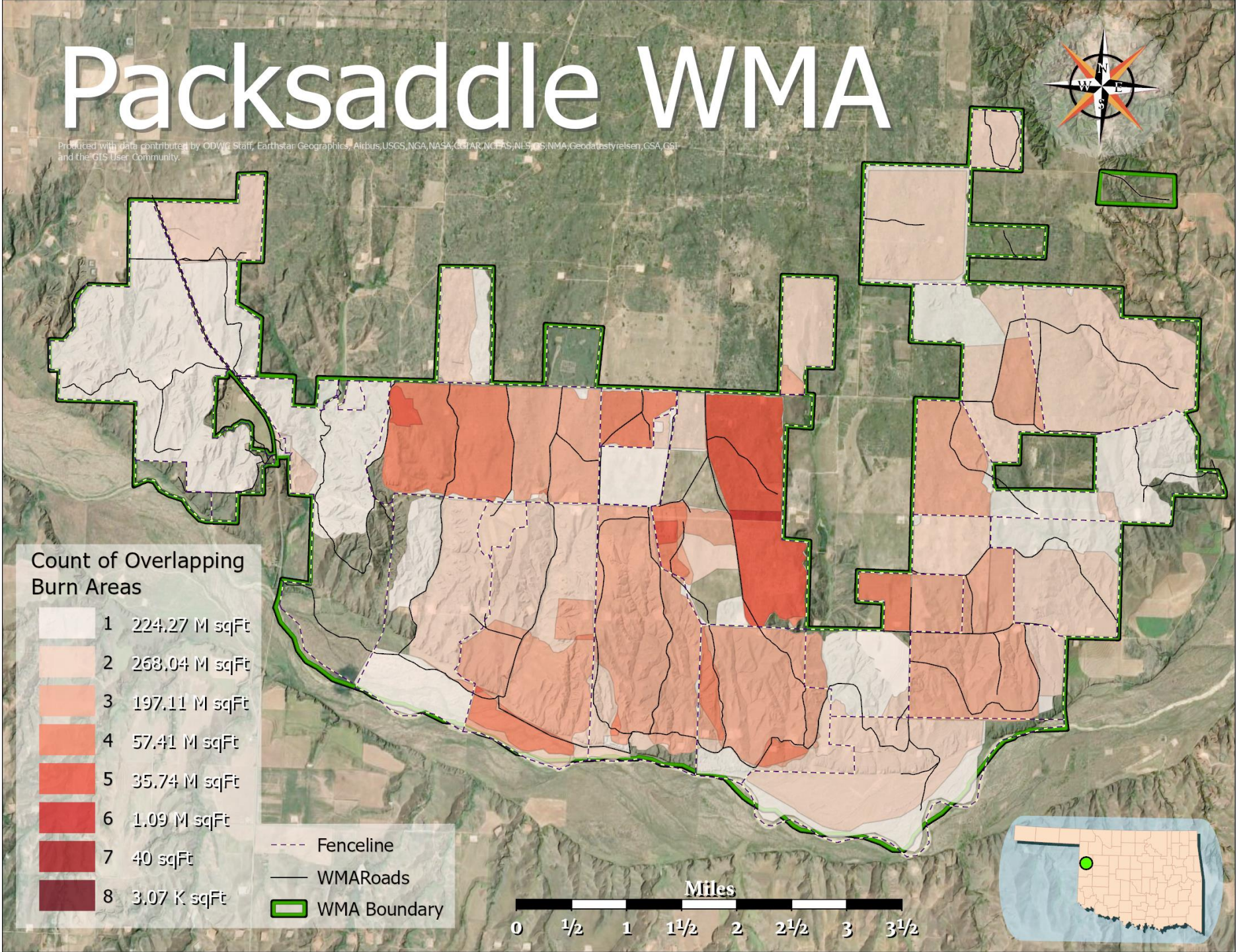
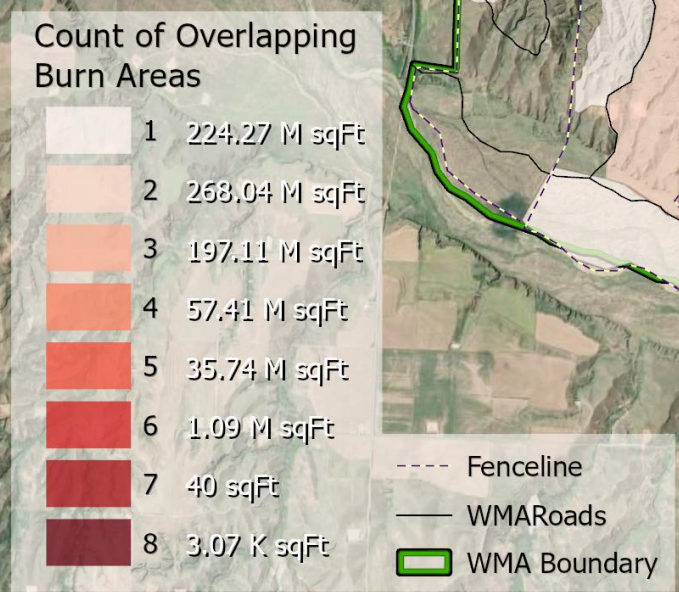


WMA Boundaries



Packsaddle WMA

Produced with data contributed by ODWR Staff, Earthstar Geographics, Airbus, USGS, NGA, NASA, GeSTAR, NCEAS, NLS, US, NMA, Geodatasbyrielsen, GSA, GSI, and the GIS User Community.



Challenges

- Funding (particularly non-federal match)
 - ▣ No license increase since 2003
 - ▣ Personnel (60 staff statewide, 14 staff for NW region)
- Weather / Burn Bans
- Compliance Issues

