



Our Land • Our Heritage • Our Future

Lisa Knauf Owen – Assistant Director

Trampas Tripp – Land Management Director

Mike Sharp – OGITS Director

Woody Invasive Species Interim Study

Conservation Cost-Share Program

20 years of Woody Invasive Species work on Private Lands

Year	acres cleared	# of participants	total cost	participant's cost	cost-share paid
2000 to 2010	19,545	675	\$ 2,228,115	\$ 1,256,146	\$ 971,969
2011 to 2022	80,193	1,928	\$ 8,746,366	\$ 4,318,468	\$ 4,427,899
TOTALS	99,738	2,603	\$ 10,974,481	\$ 5,574,614	\$ 5,399,868

Partnering with USFWS and Oklahoma's Prescribed Burn Associations



How can the Conservation Commission assist with control of woody invasive species on public lands?

Through Conservation Districts:

1. Development of Conservation Management Plans
2. Make equipment and staff available to create brush free zones



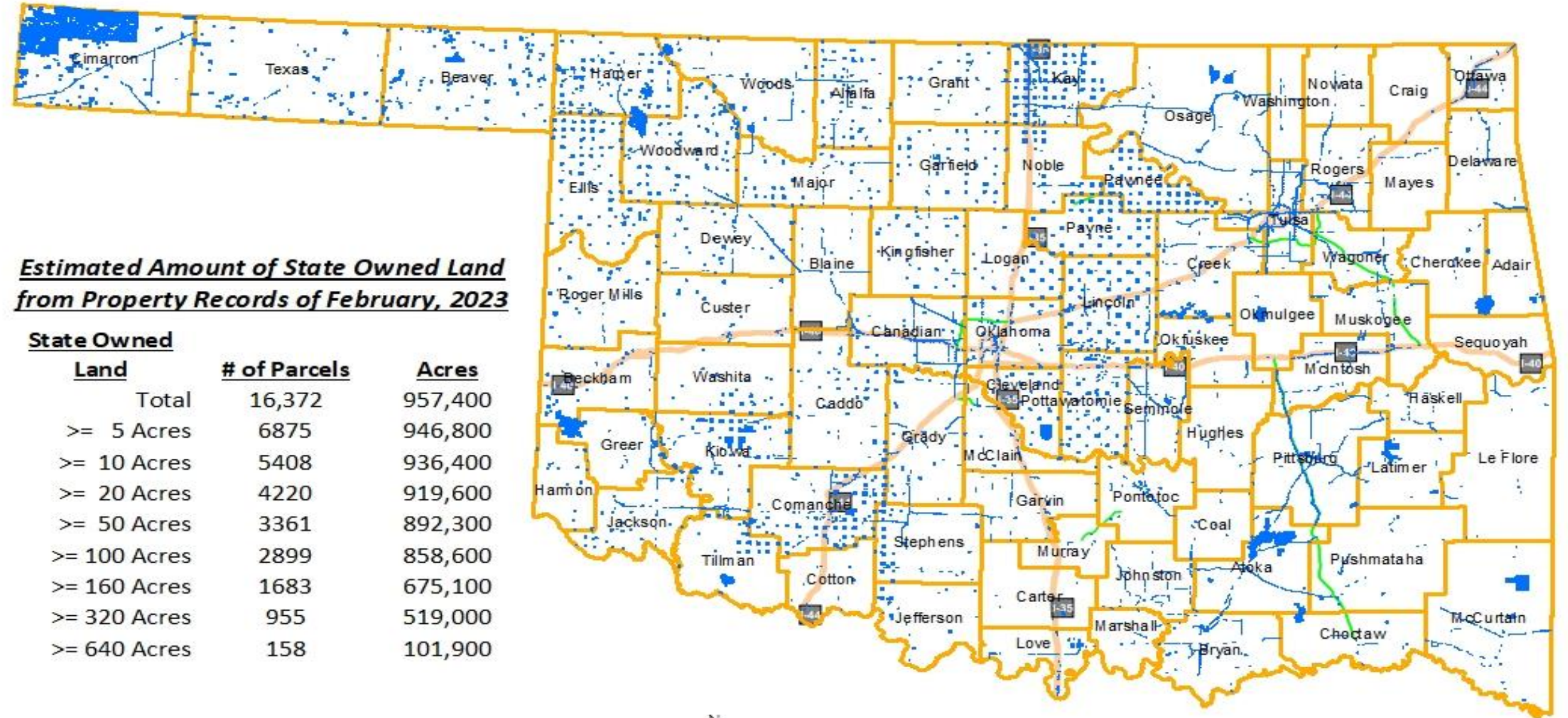
How can the Conservation Commission assist with control of woody invasive species on public lands?



3. Work with state and local entities to use public lands as demonstration areas for Best Management Practices for control of invasive species.

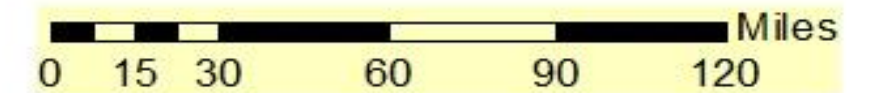
Mapping Capabilities

State Owned Land



Estimated Amount of State Owned Land from Property Records of February, 2023

<u>State Owned Land</u>	<u># of Parcels</u>	<u>Acres</u>
Total	16,372	957,400
>= 5 Acres	6875	946,800
>= 10 Acres	5408	936,400
>= 20 Acres	4220	919,600
>= 50 Acres	3361	892,300
>= 100 Acres	2899	858,600
>= 160 Acres	1683	675,100
>= 320 Acres	955	519,000
>= 640 Acres	158	101,900

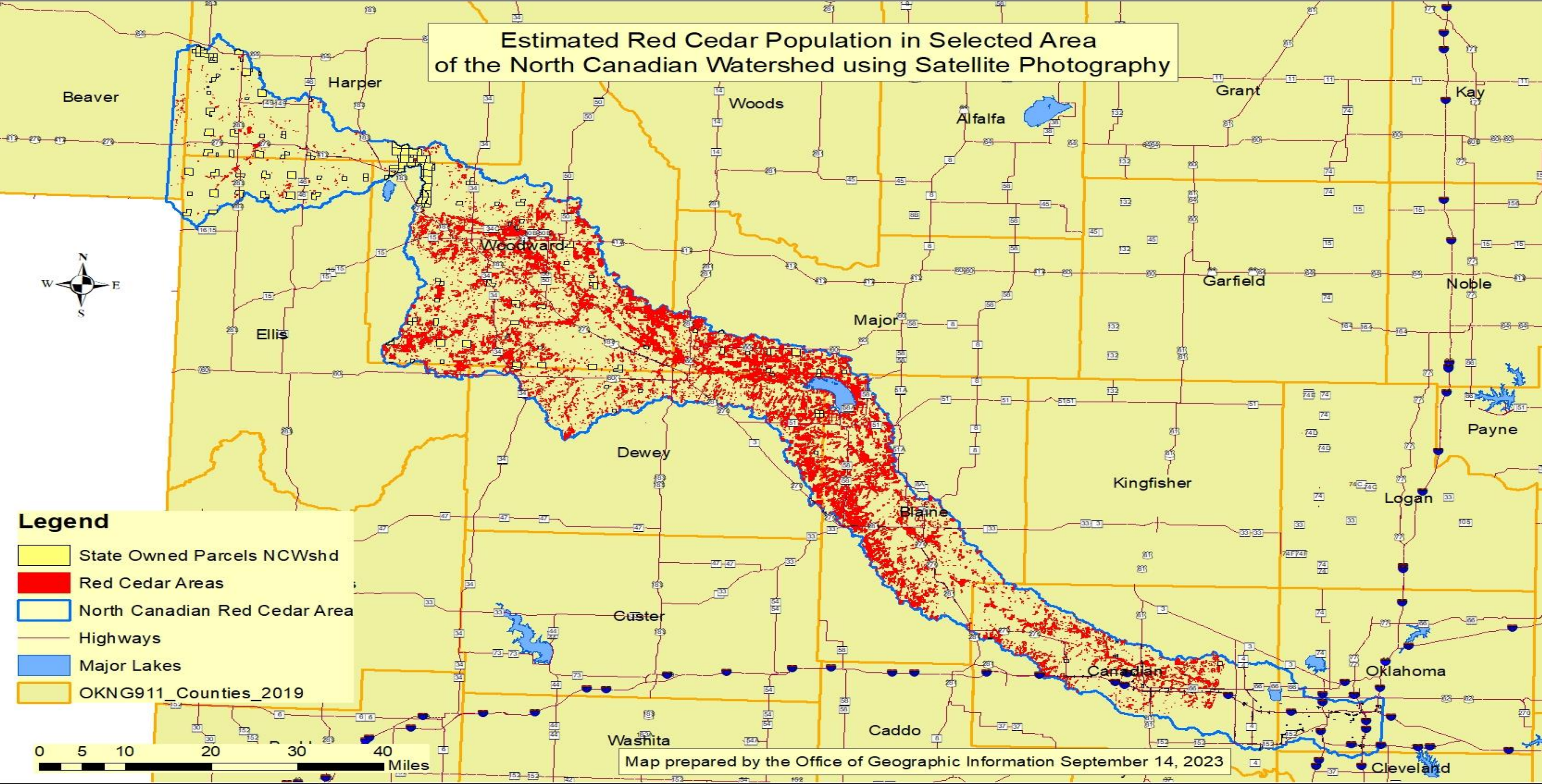


Legend

■ State_Owned_Parcels-2023215

Map prepared by the Office of Geographic Information September 14, 2023

Estimated Red Cedar Population in Selected Area of the North Canadian Watershed using Satellite Photography





OKLAHOMA
CONSERVATION
COMMISSION

2800 N Lincoln Blvd, Suite 200
Oklahoma City, OK 73105

Phone
405-521-2384

conservation.ok.gov